

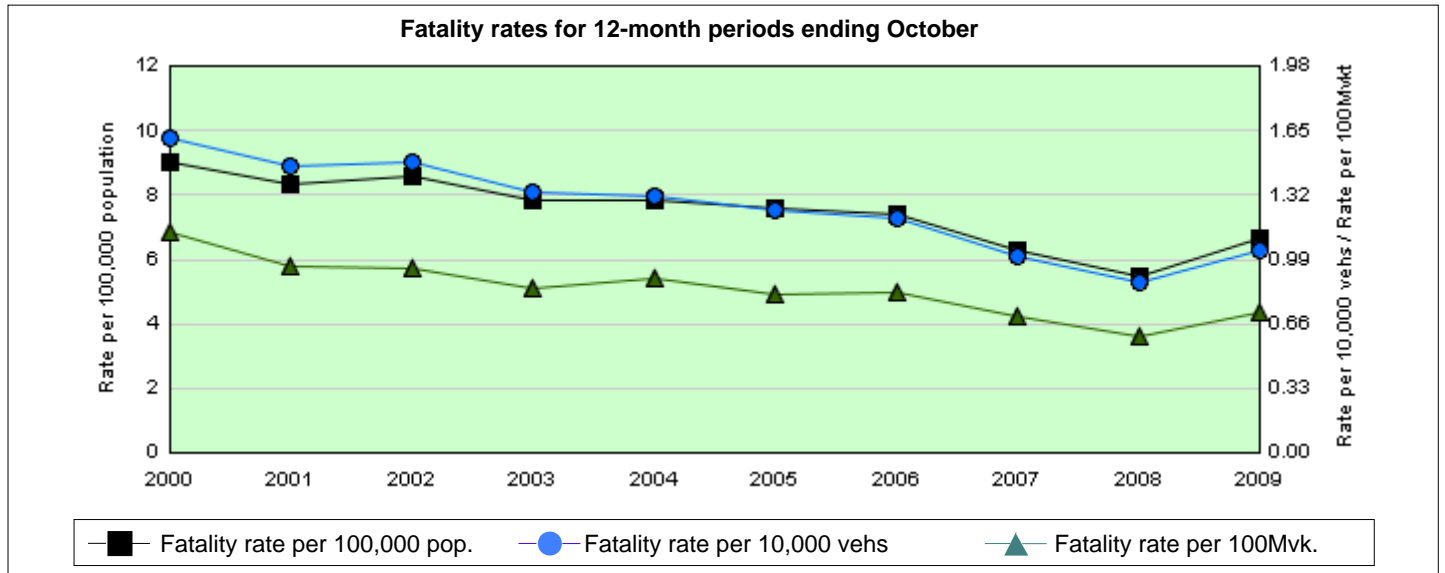


PRELIMINARY TRAFFIC CRASH DATA

MONTHLY BULLETIN
October 2009

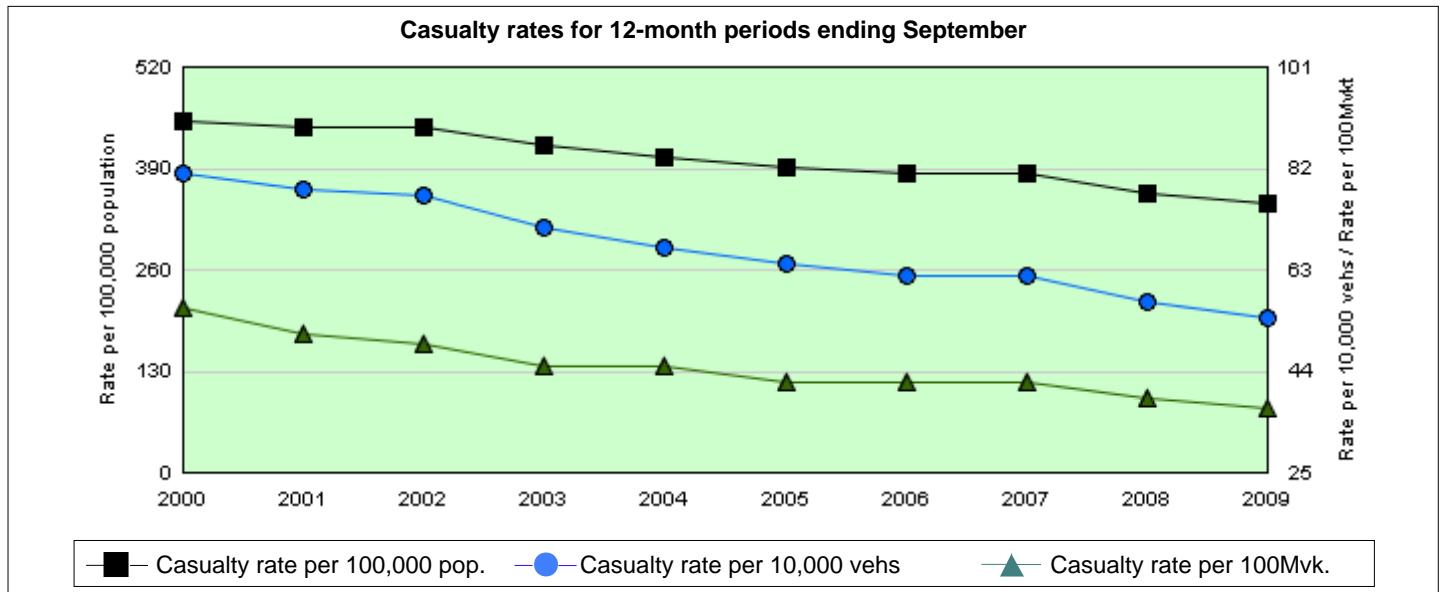
Fatality rates for 12-month period ending October 2009

Number of fatalities	467
Rate per 100,000 population ¹	6.6
Rate per 10,000 vehicles ²	1
Rate per 100 million vehicle kilometres travelled ³	0.7



Casualty rates for 12-month period ending September 2009

Number of casualties*	24,300
Rate per 100,000 population ¹	346
Rate per 10,000 vehicles ²	54
Rate per 100 million vehicle kilometres travelled ³	37



¹ Based on preliminary estimated population data

² Based on RTA vehicle registration data

³ Travel estimates post 2007 are based on long term growth in ABS estimated travel (1998 to 2007) extrapolated from the last published survey (2007)

* Based on preliminary data supplied by the NSW Police from the Computerised Operational Policing System (COPS) database. Casualty statistics are 1 month in arrears.

TABLE OF CONTENTS

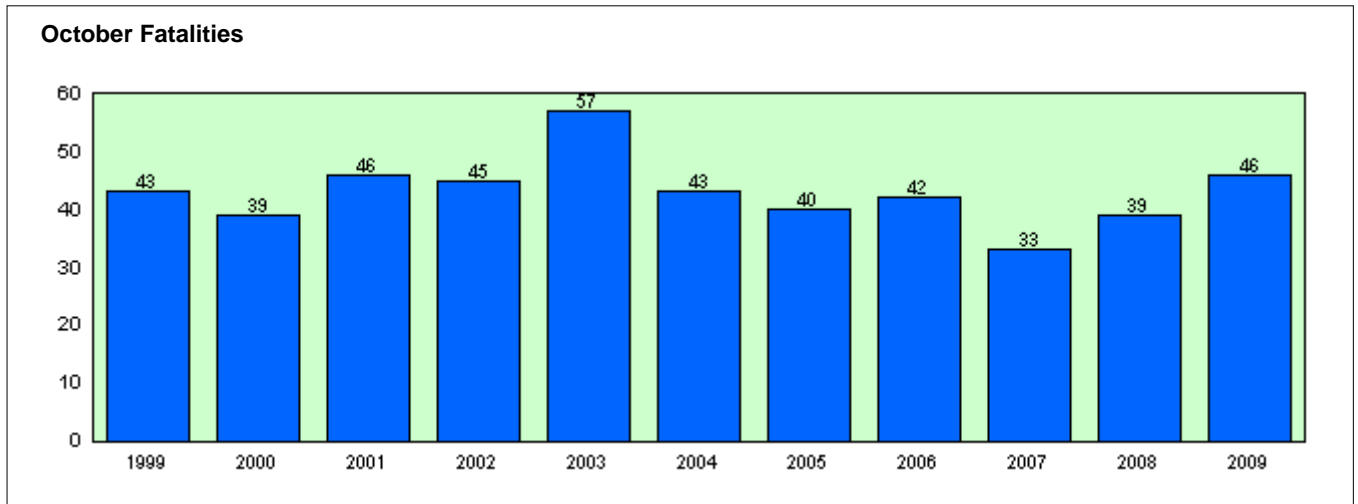
SECTION 1: MONTHLY COMPARISON AND KEY POINTS	1
SECTION 2: MONTHLY STATISTICS	2
2.1 FATALITIES	2
2.2 FATAL CRASHES	3
2.3 COMPARISON WITH OTHER STATES	4
2.3.1 Fatalities	4
2.3.2 Fatal Crashes	4
SECTION 3: TRENDS	5
3.1 FATALITIES - OVERALL TREND	5
3.1.1 Number of fatalities for 12 months ending October 2009, road user class	5
3.1.2 Number of fatalities for 12 months ending October 2009, sex of fatality	5
3.1.3 Number of fatalities for 12 months ending October 2009, age of fatality	6
3.1.4 Number of fatalities for 12 months ending October 2009, urbanisation	7
3.1.5 Number of fatalities for 12 months ending October 2009, RTA Region	7
3.2 FACTORS INVOLVED IN FATAL CRASHES	8
3.2.1 Number of fatal crashes for 12 months ending October 2009, speeding involvement	8
3.2.2 Number of fatal crashes for 12 months ending October 2009, fatigue involvement	8
3.2.3 Number of fatal crashes for 12 months ending August 2009, alcohol involvement	8
3.3 SAFETY DEVICE USAGE OF FATALITIES	9
3.3.1 Number of road vehicle fatalities for 12 months ending October 2009, safety device usage, road user class	9
3.4 MOTOR VEHICLE CONTROLLERS INVOLVED IN FATAL CRASHES	10
3.4.1 Number of motor vehicle controllers involved in fatal crashes for 12 months ending October 2009, sex of controller	10
3.4.2 Number of motor vehicle controllers involved in fatal crashes for 12 months ending October 2009, age of controller	10
3.4.3 Number of motor vehicle controllers involved in fatal crashes for 12 months ending August 2009, alcohol involvement	10
3.5 CASUALTIES - OVERALL TREND	11
3.5.1 Twelve months comparison	11
3.5.2 Year-to-date comparison	11

Explanatory Notes

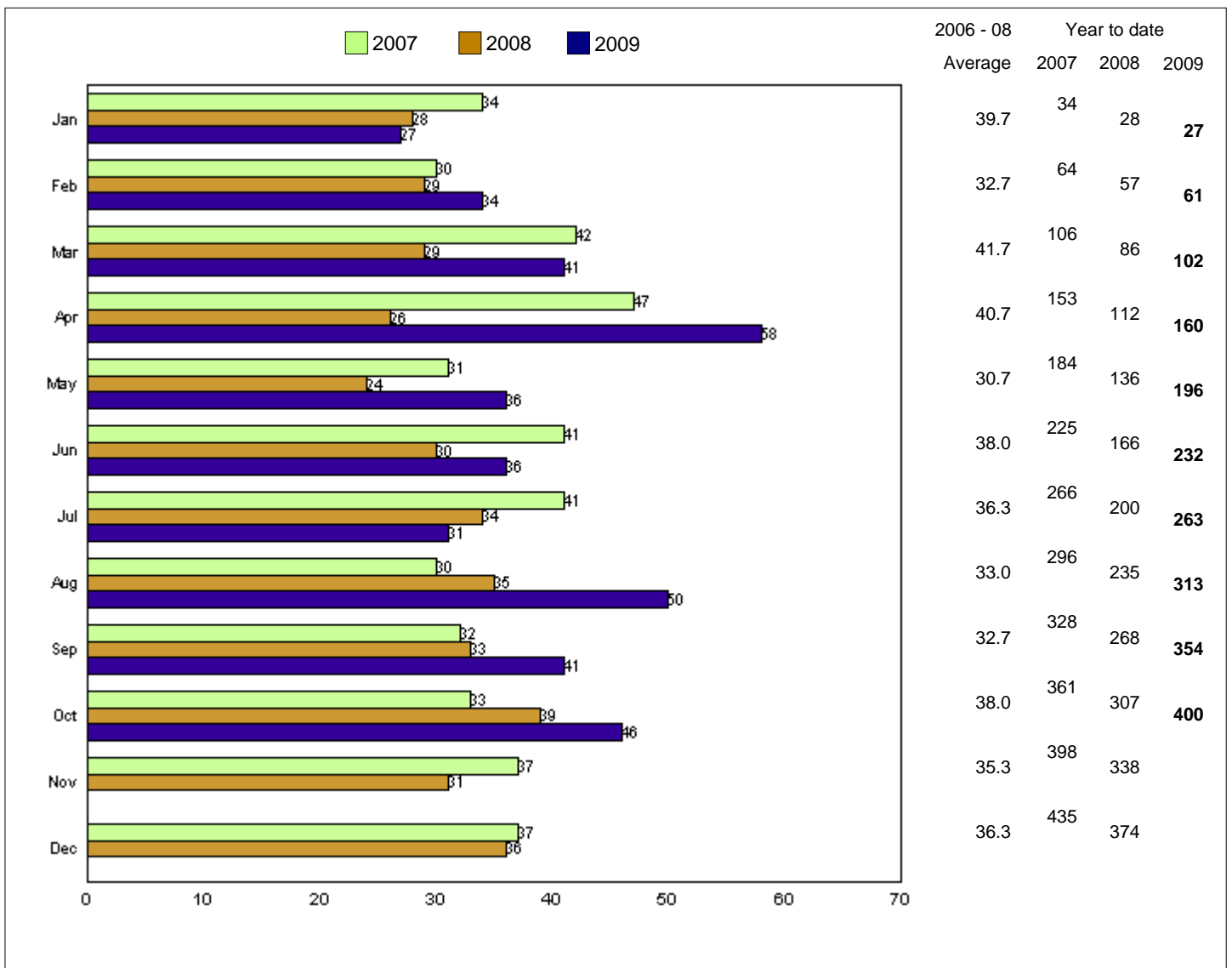
- * Data are preliminary and are compiled on the first working day of the month.
- * Casualty figures reported in Section 3.5 are based on preliminary data supplied by the NSW Police Force. They are comprised of all casualties, including fatalities.
- * Vehicle kilometres travelled are estimates based on changes in fuel consumption since the Australian Bureau of Statistics Survey of Motor Vehicle Use.

SECTION 1: MONTHLY COMPARISON AND KEY POINTS

NSW road fatalities for October: 1999 - 2009



NSW road fatalities: monthly comparison



This month's key points

There were 46 fatalities recorded on NSW roads in October 2009, which is 7 (17%) more than the number of fatalities recorded for October 2008. Fatalities in the 30-39 age group increased by 7 (up from 2 to 9) whilst female fatalities increased by 10 (up from 4 to 14) in October 2009 compared to October 2008.

SECTION 2: MONTHLY STATISTICS

2.1 FATALITIES

	Oct 2009	Oct 2008	Differ- ence	Year to Date 2009	Year to Date 2008	Differ- ence
Road User Class						
Driver	24	24	0	193	166	27
Passenger	7	8	-1	75	54	21
Pedestrian	5	2	3	56	38	18
Motorcyclist ¹	8	5	3	62	44	18
Pedal cyclist ¹	2	0	2	14	5	9
Other	0	0	0	0	0	0
Total	46	39	7	400	307	93
Age (years)						
0-4	0	0	0	8	2	6
5-16	3	2	1	19	10	9
17-20	3	2	1	46	37	9
21-25	6	6	0	45	35	10
26-29	2	0	2	30	13	17
30-39	9	2	7	63	45	18
40-49	5	6	-1	47	47	0
50-59	8	6	2	56	39	17
60-69	4	7	-3	33	29	4
70+	4	8	-4	50	50	0
Unknown	2	0	2	3	0	3
Total	46	39	7	400	307	93
Sex						
Male	32	35	-3	296	234	62
Female	14	4	10	104	73	31
Total²	46	39	7	400	307	93
RTA Region						
Sydney	11	12	-1	113	90	23
Northern	7	6	1	60	52	8
Hunter	11	7	4	71	50	21
Southern	4	6	-2	39	53	-14
South West	5	7	-2	46	30	16
Western	8	1	7	71	32	39
Total	46	39	7	400	307	93
Road Classification						
Freeway/motorway	0	0	0	11	4	7
State highway	16	14	2	110	93	17
Other classified road ³	17	10	7	142	96	46
Unclassified road	13	15	-2	137	114	23
Total	46	39	7	400	307	93

¹ Includes passengers

² Includes unknown sex

³ Includes Main Road, Secondary Road and Tourist Road

2.2 FATAL CRASHES

	Oct 2009	Oct 2008	Differ- ence	Year to Date 2009	Year to Date 2008	Differ- ence
Urbanisation						
Sydney Metropolitan Area	8	9	-1	101	78	23
Newcastle Metropolitan Area	3	1	2	19	13	6
Wollongong Metropolitan Area	2	1	1	7	14	-7
Country urban (speed limit =<80km/h)	6	8	-2	76	71	5
Country non-urban (speed limit >80km/h)	25	16	9	160	112	48
Country unknown (speed limit unknown)	0	0	0	4	0	4
Total	44	35	9	367	288	79
Location Type						
Intersection	7	7	0	58	63	-5
Non-Intersection	37	28	9	309	225	84
Total	44	35	9	367	288	79
Route						
Princes Highway	0	0	0	7	11	-4
Hume Highway	3	4	-1	14	15	-1
Great Western Highway	0	0	0	3	4	-1
New England Highway	1	2	-1	7	9	-2
Pacific Highway	7	4	3	27	21	6
Newell Highway	1	0	1	8	7	1
All other routes	32	25	7	301	221	80
Total	44	35	9	367	288	79
Road Classification						
Freeway/motorway	0	0	0	9	4	5
State highway	16	13	3	98	84	14
Other classified road ¹	16	9	7	129	90	39
Unclassified road	12	13	-1	131	110	21
Total	44	35	9	367	288	79
RTA Region						
Sydney	11	11	0	108	87	21
Northern	7	6	1	59	49	10
Hunter	10	5	5	65	46	19
Southern	4	5	-1	35	49	-14
South West	5	7	-2	40	29	11
Western	7	1	6	60	28	32
Total	44	35	9	367	288	79
Type of Crash						
Car crash	36	25	11	252	205	47
Light truck crash	4	9	-5	60	52	8
Heavy truck crash	4	8	-4	49	50	-1
Heavy rigid truck crash	2	2	0	22	12	10
Articulated truck crash	2	6	-4	32	38	-6
Bus crash	1	0	1	7	4	3
Motorcycle crash	8	5	3	61	44	17
All fatal crashes ²	44	35	9	367	288	79

¹ Includes Main Road, Secondary Road and Tourist Road

² The type of crash categories are not mutually exclusive and must not be added together.

2.3 COMPARISON WITH OTHER STATES

Please note that data included in this section represent statistics for the previous month¹

2.3.1 Fatalities

	Sep 2009	Sep 2008	Differ- ence	Year to date 2009	Year to date 2008	Differ- ence
State/Territory						
New South Wales	41	33	8	354	268	86
Victoria	13	18	-5	214	227	-13
Queensland	32	25	7	269	249	20
South Australia	9	14	-5	93	74	19
Western Australia	9	11	-2	125	147	-22
Tasmania	0	0	0	53	30	23
Northern Territory	4	8	-4	22	57	-35
Australian Capital Territory	2	1	1	10	13	-3
Total	110	110	0	1,140	1,065	75

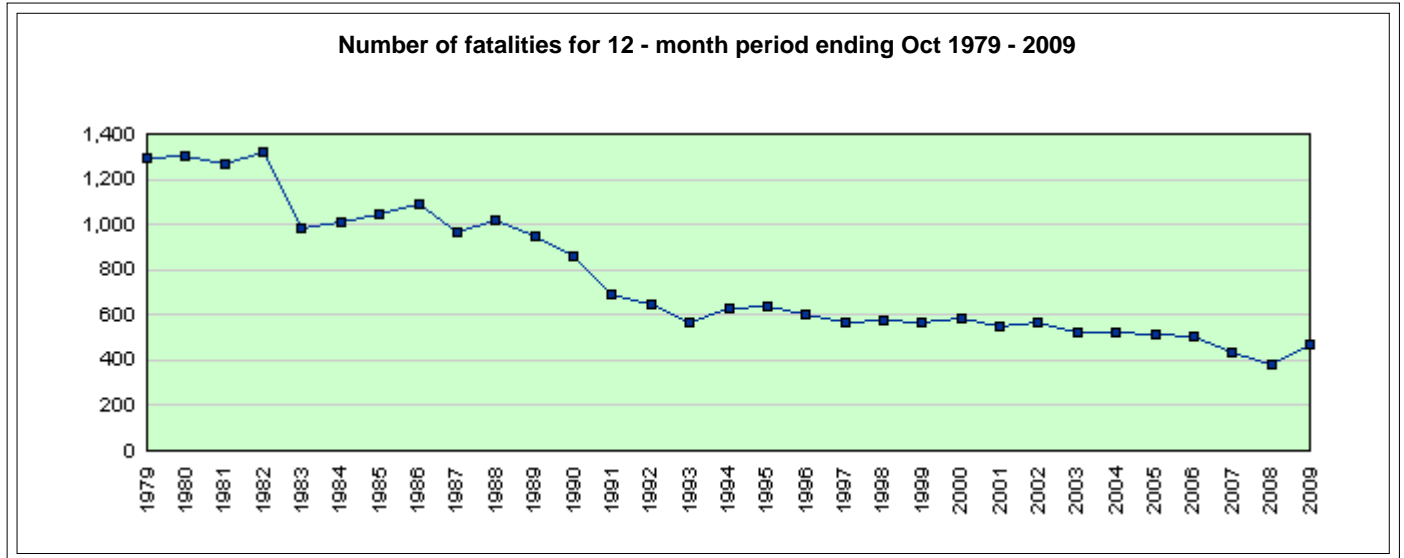
2.3.2 Fatal Crashes

	Sep 2009	Sep 2008	Differ- ence	Year to date 2009	Year to date 2008	Differ - ence
State/Territory						
New South Wales	36	29	7	323	253	70
Victoria	13	17	-4	193	206	-13
Queensland	30	22	8	236	220	16
South Australia	8	11	-3	79	64	15
Western Australia	8	11	-3	117	131	-14
Tasmania	0	0	0	42	29	13
Northern Territory	4	7	-3	22	53	-31
Australian Capital Territory	2	1	1	9	13	-4
Total	101	98	3	1,021	969	52

¹ Source: Australian Transport Safety Bureau

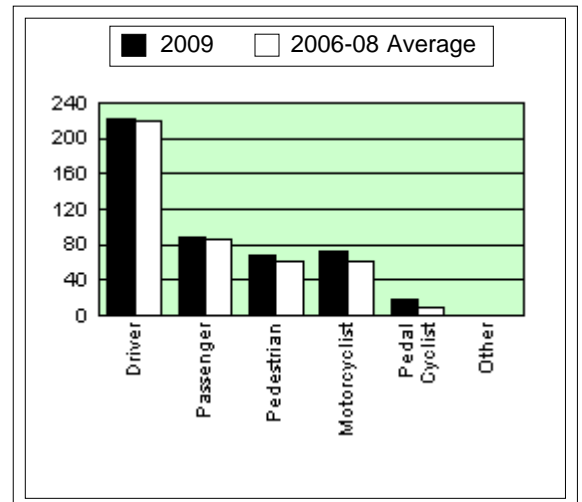
SECTION 3: TRENDS

3.1 FATALITIES - OVERALL TREND



3.1.1 Number of fatalities for 12 months ending October 2009, road user class

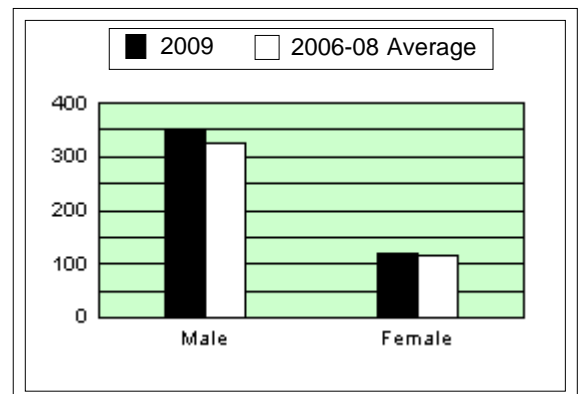
Road User Class ¹	2009	2006-08 Average	% Change
Driver	221	220.7	0.2%
Passenger	88	86.3	1.9%
Pedestrian	67	62.0	8.1%
Motorcyclist	73	61.7	18.4%
Pedal Cyclist	17	9.7	75.9%
Other	1	0.0	N/A
Total	467	440.3	6.1%



¹ The categories motorcyclist and pedal cyclist include passengers.

3.1.2 Number of fatalities for 12 months ending October 2009, sex of fatality

Sex of fatality	2009	2006-08 Average	% Change
Male	346	325.0	6.5%
Female	121	115.3	4.9%
Total²	467	440.3	6.1%

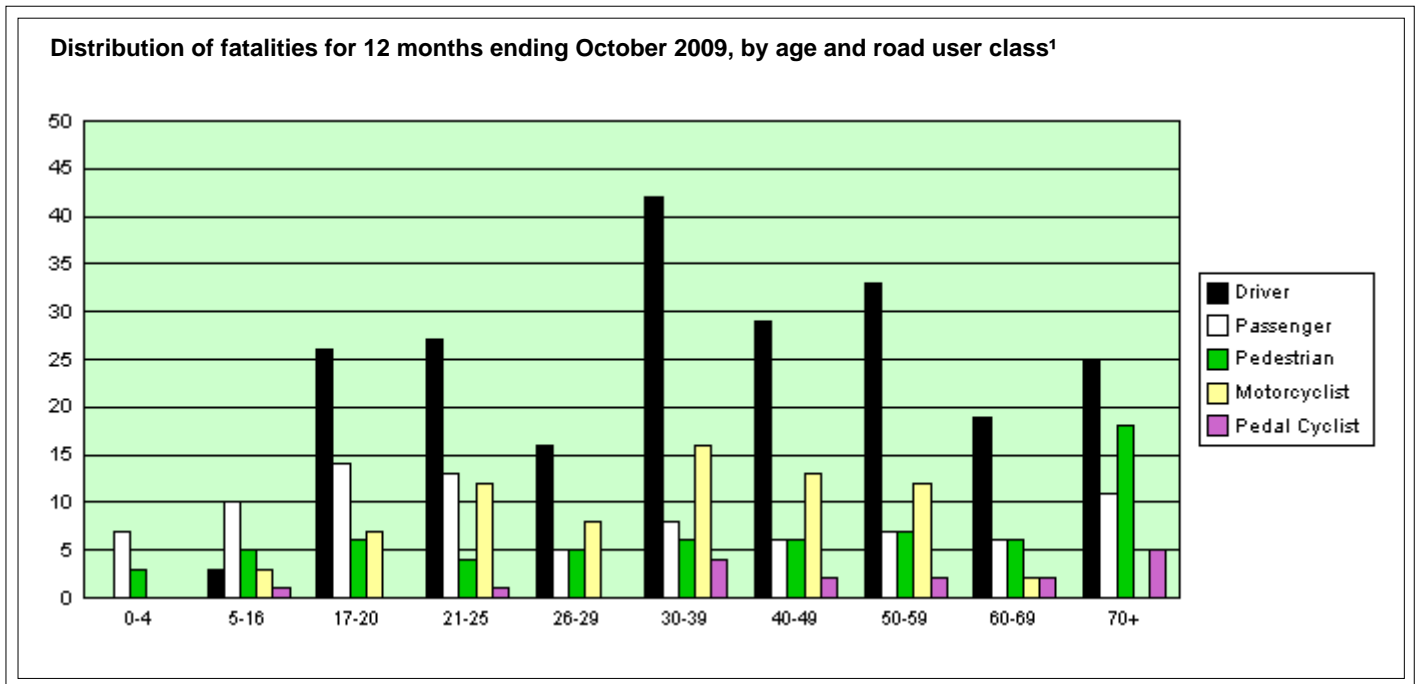
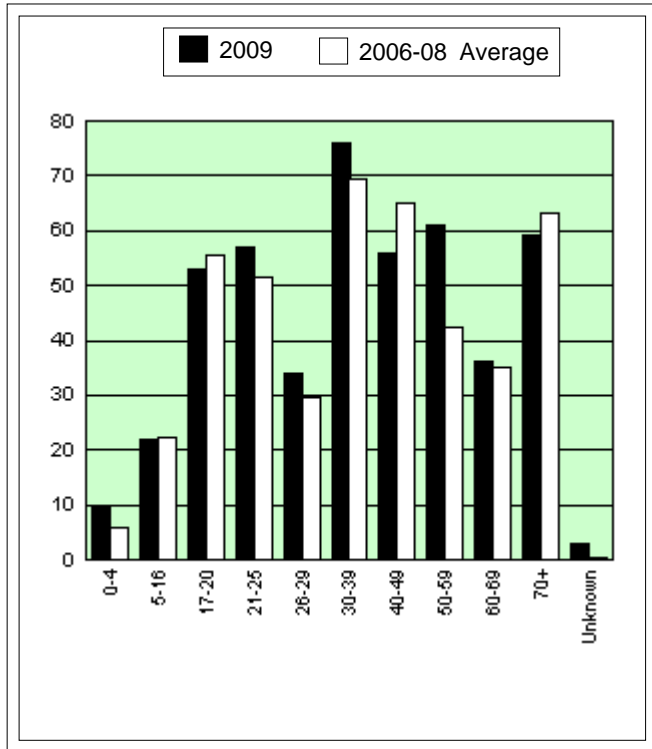


¹ The categories motorcyclist and pedal cyclist include passengers.

² Includes unknown sex

3.1.3 Number of fatalities for 12 months ending October 2009, age of fatality

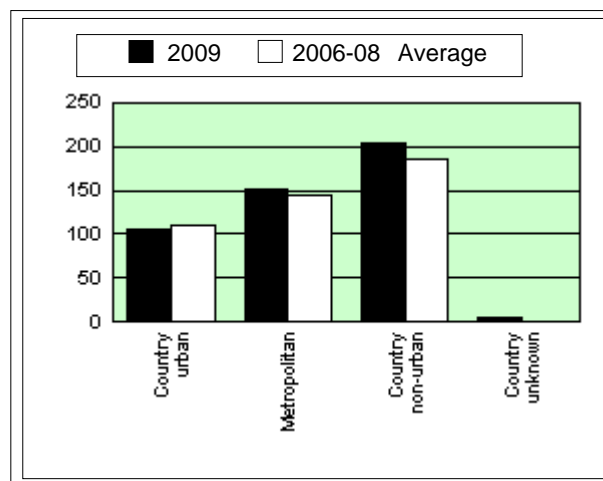
Age	2009	2006-08 Average	% Change
0-4	10	6.0	66.7%
5-16	22	22.3	-1.5%
17-20	53	55.7	-4.8%
21-25	57	51.3	11.0%
26-29	34	29.7	14.6%
30-39	76	69.3	9.6%
40-49	56	65.0	-13.8%
50-59	61	42.3	44.1%
60-69	36	35.0	2.9%
70+	59	63.3	-6.8%
Unknown	3	0.3	N/A
Total	467	440.3	6.1%



¹ The categories motorcyclist and pedal cyclist include passengers.

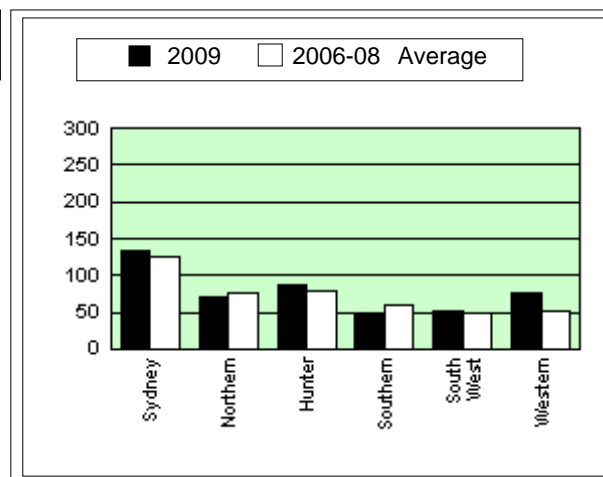
3.1.4 Number of fatalities for 12 months ending October 2009, urbanisation

Urbanisation	2009	2006-08 Average	% Change
Country urban	106	110.3	-3.9%
Metropolitan	152	145.3	4.6%
Country non-urban	204	184.7	10.5%
Country unknown	5	0.0	N/A
Total	467	440.3	6.1%



3.1.5 Number of fatalities for 12 months ending October 2009, RTA Region

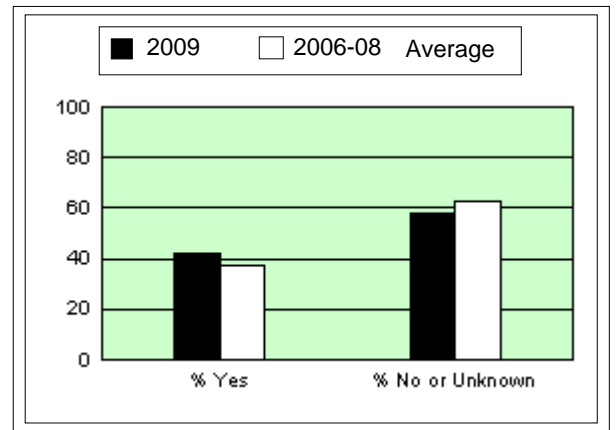
RTA Region	2009	2006-08 Average	% Change
Sydney	133	126.0	5.6%
Northern	72	76.3	-5.7%
Hunter	87	78.3	11.1%
Southern	48	59.0	-18.6%
South West	51	48.0	6.3%
Western	76	52.7	44.3%
Total	467	440.3	6.1%



3.2 FACTORS INVOLVED IN FATAL CRASHES

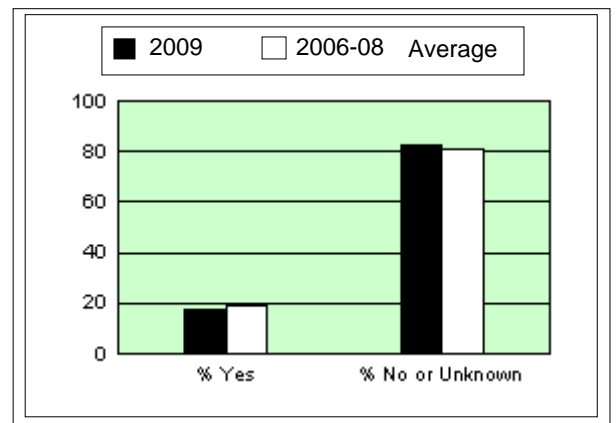
3.2.1 Number of fatal crashes for 12 months ending October 2009, speeding involvement

Excessive Speed ?	2009	2006-08 Average	% Change
Yes	183	152.0	20.4%
% Yes	42.4%	37.7%	
No or Unknown	249	251.7	-1.1%
% No or Unknown	57.6%	62.3%	
Total	432	403.7	7.0%



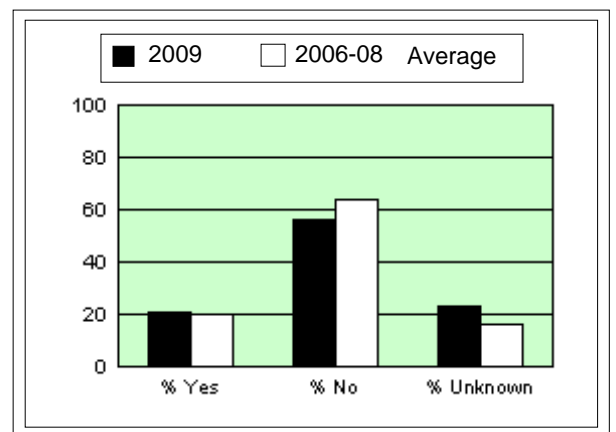
3.2.2 Number of fatal crashes for 12 months ending October 2009, fatigue involvement

Fatigue ?	2009	2006-08 Average	% Change
Yes	75	75.7	-0.9%
% Yes	17.4%	18.7%	
No or Unknown	357	328.0	8.8%
% No or Unknown	82.6%	81.3%	
Total	432	403.7	7.0%



3.2.3 Number of fatal crashes for 12 months ending August 2009, alcohol involvement

Alcohol ? ¹	2009	2006-08 Average	% Change
Yes	87	83.0	4.8%
% Yes	20.9%	20.3%	
No	234	259.0	-9.7%
% No	56.3%	63.5%	
Unknown	95	66.0	43.9%
% Unknown	22.8%	16.2%	
Total	416	408.0	2.0%

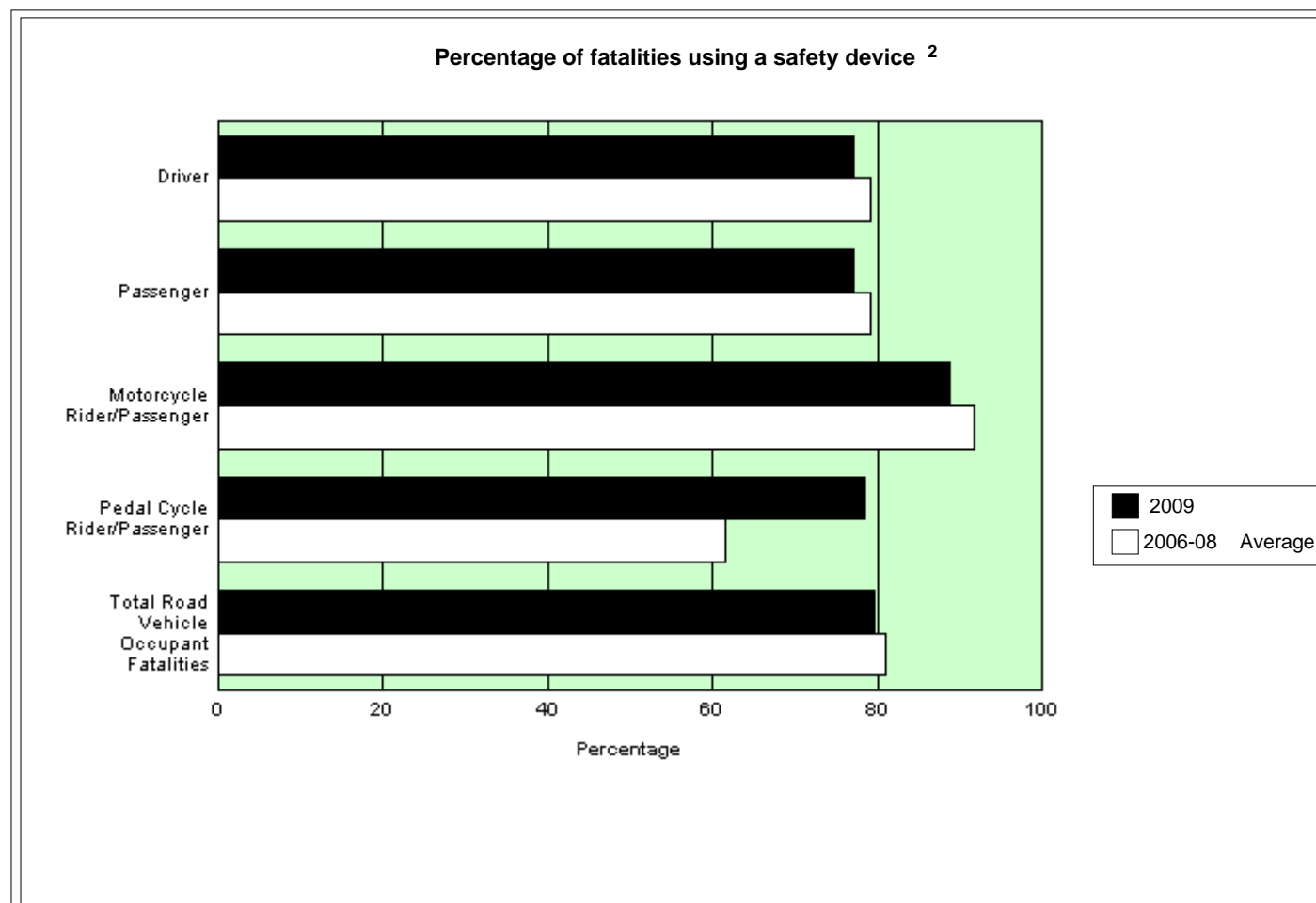


¹ Data for blood alcohol concentration are only available up to August 2009 inclusive.

3.3 SAFETY DEVICE USAGE OF FATALITIES

3.3.1 Number of road vehicle fatalities for 12 months ending October 2009, safety device usage, road user class

Safety Device?	Driver		Passenger		Motorcycle Rider/Passenger		Pedal Cycle Rider/Passenger		Total Road Vehicle Occupant Fatalities ¹	
	2009	2006-08 Average	2009	2006-08 Average	2009	2006-08 Average	2009	2006-08 Average	2009	2006-08 Average
	Unknown	34	32.7	14	12.7	1	1.3	3	1.0	52
Worn	144	149.0	57	58.3	64	55.3	11	5.3	277	268.0
Not Worn	43	39.0	17	15.3	8	5.0	3	3.3	71	62.7
Total	221	220.7	88	86.3	73	61.7	17	9.7	400	378.3



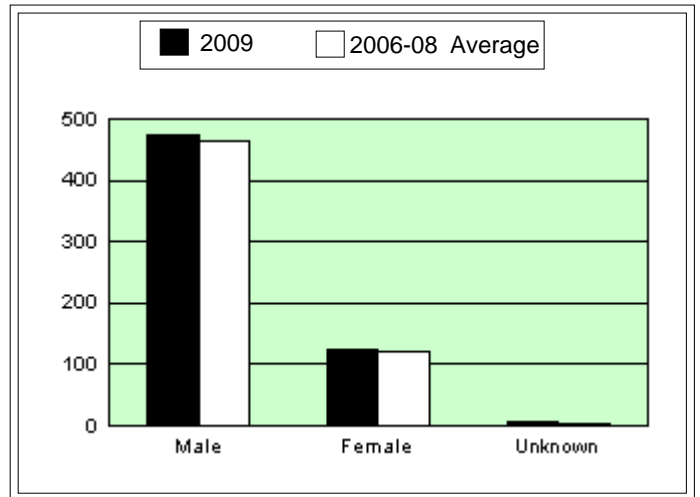
¹ Includes fatalities of other or unknown road user class.

² Excludes cases of unknown safety device usage

3.4 MOTOR VEHICLE CONTROLLERS INVOLVED IN FATAL CRASHES

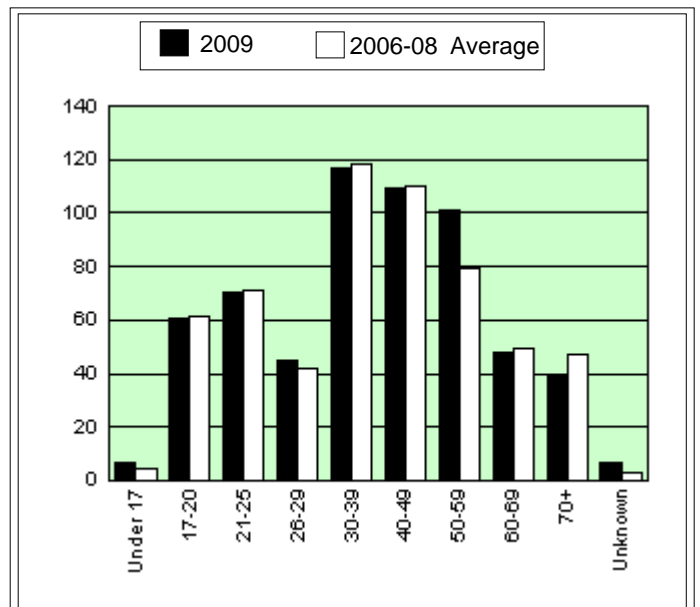
3.4.1 Number of motor vehicle controllers involved in fatal crashes for 12 months ending October 2009, sex of controller

Sex	2009	2006-08 Average	% Change
Male	475	462.7	2.7%
Female	124	120.7	2.8%
Unknown	6	2.3	157.1%
Total	605	585.7	3.3%



3.4.2 Number of motor vehicle controllers involved in fatal crashes for 12 months ending October 2009, age of controller

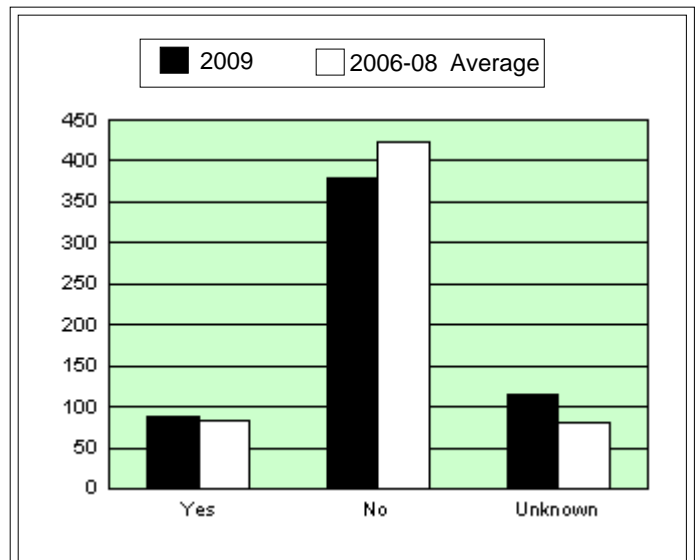
Age	2009	2006-08 Average	% Change
Under 17	7	4.7	50.0%
17-20	61	61.3	-0.5%
21-25	70	71.0	-1.4%
26-29	45	41.7	8.0%
30-39	117	118.0	-0.8%
40-49	109	110.3	-1.2%
50-59	101	79.0	27.8%
60-69	48	49.7	-3.4%
70+	40	47.0	-14.9%
Unknown	7	3.0	133.3%
Total	605	585.7	3.3%



3.4.3 Number of motor vehicle controllers involved in fatal crashes for 12 months ending August 2009, alcohol involvement

Alcohol Involvement ¹	2009	2006-08 Average	% Change
Yes	87	83.0	4.8%
No	380	424.3	-10.4%
Unknown	115	80.0	43.8%
Total	582	587.3	-0.9%

¹ Data for blood alcohol concentration are only available up to August 2009 inclusive.



3.5 CASUALTIES - OVERALL TREND

Casualty figures presented in this section are based on preliminary data supplied by the NSW Police from the Computerised Operational Policing System (COPS) database.

RTA Region figures are estimates based on combinations of NSW Police Local Area Commands. These combinations do not correspond exactly to RTA Region boundaries.

3.5.1 Twelve months comparison

RTA Region	12 Months ending Sep, 2009	12 Months ending Sep, 2008	% Change
Sydney	13,691	14,041	-2.5%
Northern	2,354	2,412	-2.4%
Hunter	3,373	3,514	-4.0%
Southern	2,554	2,578	-0.9%
South West	1,013	1,026	-1.3%
Western	1,315	1,324	-0.7%
Total	24,300	24,895	-2.4%

3.5.2 Year-to-date comparison

RTA Region	Jan to Sep, 2009	Jan to Sep, 2008	% Change
Sydney	10,156	10,375	-2.1%
Northern	1,750	1,750	0.0%
Hunter	2,487	2,570	-3.2%
Southern	1,906	1,908	-0.1%
South West	776	757	2.5%
Western	1,022	973	5.0%
Total	18,097	18,333	-1.3%