

Upgrading the Pacific Highway Warrell Creek to Urunga

Inputs from the community have played a significant role in shaping the project through the route selection and concept design stages.

Community involvement case study

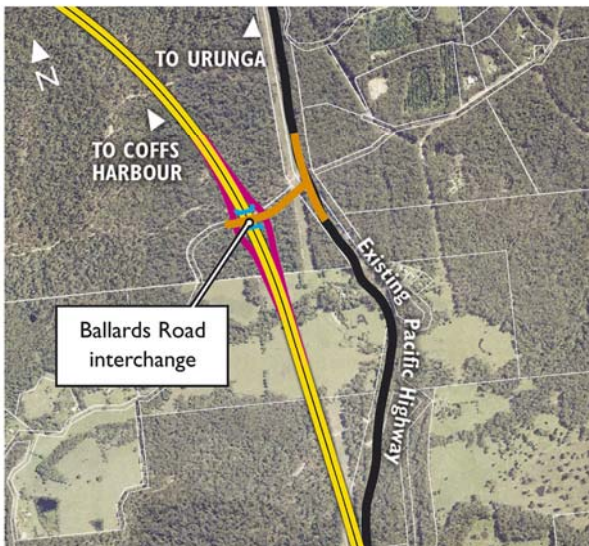
The study team was committed to reviewing suggestions from the community and incorporating them into the project if it could be demonstrated that the suggestion was able to provide a better balance of environmental, social and functional aspects.

The following are three examples of how the study team considered and acted upon suggestions from the community.

South Urunga interchange

Following the release of the preferred route, further consultation was undertaken and issues were raised about the need for an interchange to the south of Urunga to provide better access for emergency service vehicles, support the Urunga business area and to provide better access to the growing residential areas of Valla Beach and Oyster Creek. As a result, the study team was able to design an interchange at Ballards Road to accommodate the demonstrated community needs.

PREFERRED INTERCHANGE LOCATION
AT SOUTH URUNGA



West of Macksville options

In the early stages of the development of route options, community suggestions arose about developing options outside and to the west of the investigation area. The study team reviewed the suggestions and developed two feasible route options for consideration and comparison against the options to the east of Macksville. The study team took these options through the same route assessment process as the east of Macksville options and in this case, it was demonstrated that the suggested west of Macksville options did not demonstrate a better balance of environmental, social and functional aspects.

Warrell Creek

Refinements were made to the preferred route for the Warrell Creek section as a result of community suggestions. The refinements enabled greater separation from the Proposal to residents to the east while still maintaining the benefits of the new route for residents on the existing highway to the west.