

To ensure you comply with your legal obligations you must refer to the appropriate legislation. Information on the latest laws can be checked by visiting the NSW legislation website (www.legislation.nsw.gov.au).

This publication does not represent a comprehensive statement of the law as it applies to particular problems or to individuals or as a substitute for legal advice. You should seek independent legal advice if you need assistance on the application of the law to your situation.

For the latest information go to www.rta.nsw.gov.au or call 13 22 13. Specific information sheets will be available for:

- Registered vehicle operators and owners.
- Insurers, self-insurers, dealers and auto-dismantlers.
- Vehicle repairers.
- Authorised inspection stations.

© Roads and Traffic Authority

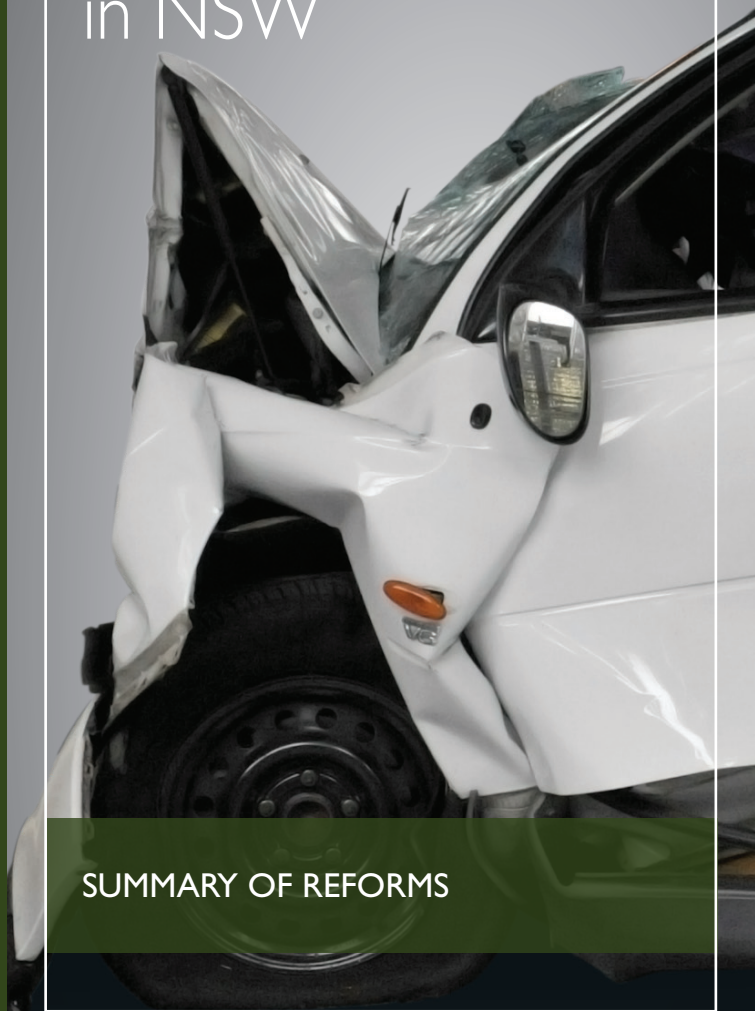
The information in this document is accurate at the time of printing.

For further enquiries
www.rta.nsw.gov.au | 13 22 13

October 2010
RTA/Pub. 10.318



Changes to **written-off vehicle laws** in NSW



SUMMARY OF REFORMS

New laws will soon be introduced to change the way written-off vehicles are managed in NSW.

The laws are being introduced to improve consumer protection and vehicle safety, and reduce vehicle theft and re-birthing, where stolen parts are used to illegally rebuild written-off vehicles.

All NSW light vehicles written-off after the legislation is introduced will be classified as statutory (non-repairable) write-offs and will not be able to be registered in Australia. A light vehicle is a registrable vehicle less than 4.5 tonnes gross vehicle mass (GVM), and includes cars, trailers, caravans and motorcycles.

Limited applications to repair and register vehicles will be considered on a case-by-case basis. The RTA will only consider an application if the vehicle satisfies specific criteria. Additionally, an application will be considered only if the vehicle is kept by the same operator (or owner if it's not registered), or a class of person defined in the RTA regulations.

The process for applying to the RTA is illustrated below.

Transitional arrangements

For vehicles recorded as repairable write-offs before the legislation starts, the following registration arrangements will apply:

- For six months after the legislation starts, the vehicle must pass two inspections – one for mechanical safety and one for identity validation.
- From six months onwards after the legislation starts, repairs must be certified by a NSW Fair Trading licensed repairer and the vehicle must pass two inspections.
- Two years after the legislation starts, vehicles which have not been registered will have their status changed to a statutory write-off. The same registration requirements for vehicles written-off from the legislation start date will then apply.

The date that the written-off vehicle legislation will be introduced will be announced in the media, at RTA Motor Registries and on the RTA website.

