

# Vehicle standards information



7

Revision 3.1 / Published 1 November 2007

## Australian Design Rules

The Australian Design Rules (ADR's) are a series of specifications and performance requirements that have been prepared for the purpose of:

- Reducing the possibility of accidents occurring through such measures as improved lights and signals, windscreen washers, wipers and demisters, safety rims and rear vision mirrors.
- Mitigating the effects of accidents which do occur, through such measures as seat belts, air bags, energy absorbing steering columns and instrument panels, anti-burst door latches and head restraints.
- Reducing the undesirable effects of motor vehicles on the environment by limiting the noise and pollutants emitted.

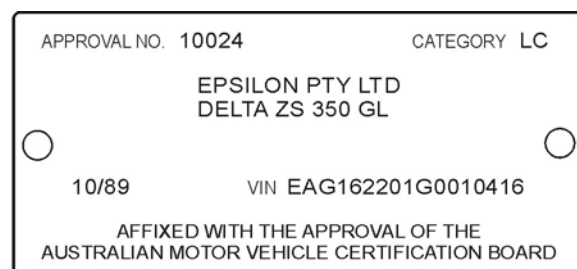
In New South Wales, the Road Transport (Vehicle Registration) Regulation 2007 requires that vehicles manufactured after particular dates meet the requirements of relevant ADR's. Many of the features associated with ADR's are not readily apparent by visual inspection and evidence of a vehicle's compliance with those requirements is shown by a metal compliance plate affixed with the approval of the Australian Motor Vehicle Certification Board. Generally these plates are secured to the panel separating the passenger and engine spaces (or luggage compartment if rear-engined) and are visible when the bonnet is open. In the case of motorcycles they are usually on the steering head below the handlebars. Compliance plates on heavy trailers are usually fitted to the left-hand main frame member or coaming.

The plates vary in size, shape, layout, colour and content. Typical plates and the information they must contain are shown in Figure 1.

FIGURE 1: TYPICAL COMPLIANCE PLATES



Typical passenger car compliance plate



Typical motorcycle compliance plate

For vehicle owners and operators in New South Wales

The Road Transport (Vehicle Registration) Regulation 2007 requires a motor vehicle (except a tractor or implement) first registered on or after 1st August 1972 to be fitted with a compliance plate. Motorcycles first registered on and after 1st October 1976 are required to be fitted with compliance plates. Exemptions are made for some vehicles such as personally imported vehicles or those used by manufacturers for evaluation purposes. Kit cars or individually constructed vehicles are not required to have a compliance plate fitted but a suitably qualified engineer must certify that the vehicle meets all applicable ADR's. This concession is for owner constructed vehicles only.

Some vehicles are manufactured in chassis form by one manufacturer then completed by another. Motor lorries and omnibuses are such vehicles and have a second compliance plate fitted to cover those ADR's applicable to the work of the second manufacturer or bodybuilder. A red compliance plate is attached to the incomplete vehicle by the original manufacturer as a first compliance plate. Second compliance plates are similar in layout to that shown in Figure 1.

The NSW *Clean Air Act* also sets requirements for emission controls. In some cases, the *Clean Air Act* applies to vehicles not subject to ADR's 30/--, 36/--, 37/--, or 41/-- and vehicle constructors are advised to check with the Department of Environment & Climate Change ( - see page 4 for contact details) to determine the requirements of the Act.

## ADR 3rd edition checklist

ADR	Title
1/00	Reversing lamps
2/00	Side door latches & hinges
3/02	Seats and seat anchorages
4/02	Seat belts
5/02	Anchorage for seat belts and child restraints
5/03	Anchorage for seat belts
6/00	Direction indicator lamps
7/00	Hydraulic brake hoses
8/01	Safety glazing material
(9)	Not yet allocated in 3rd edition
10/01	Steering column
11/00	Internal sun visor
12/00	Glare reduction in field of view
13/00	Installation of lighting & light-signalling devices on other than L-group vehicles
14/02	Rear vision mirrors
15/01	Demisting of windscreen
16/01	Windscreen wipers & washers
17/00	Fuel system
18/02	Instrumentation
19/02	Installation of lighting & light-signalling devices on L-group vehicles
20/00	Safety rims
21/00	Instrument panel
22/00	Head restraints
23/01	Passenger car tyres
24/02	Tyre & rim selection
25/02	Anti-theft lock
(26,27)	Not yet allocated in 3rd edition
28/01	External noise of motor vehicles other than L-group of vehicles
29/00	Side door strength
30/00	Diesel engine exhaust smoke emissions
31/00	Hydraulic brake systems for passenger cars

ADR	Title
(32)	Not yet allocated in 3rd edition
33/00	Brake systems for motor cycles and mopeds
34/01	Child restraint anchorages and child restraint anchor fittings
35/00	Commercial vehicle brake systems
36/00	Exhaust emission control for heavy duty vehicles
37/01	Emission control for light vehicles
38/01	Trailer brake systems
39/00	External noise of motor cycles
(40)	Not yet allocated in 3rd edition
41/00	Mandatory operation on unleaded petrol
42/03	General safety requirements
43/04	Vehicle configuration & marking
44/02	Specific purpose vehicle requirements
45/01	Lighting & light-signalling devices not covered by ECE regulations
46/00	Headlamps
47/00	Reflex reflectors
48/00	Rear registration plate illuminating devices
49/00	Front & rear position (side) lamps, stop lamps and end-outline marker lamps
50/00	Front fog lamps
51/00	Filament globes
52/00	Rear fog lamps
53/00	Position lamps, stop lamps, direction indicators & rear plate lamps for L-group vehicles
54/00	Passing beam headlamps for mopeds
55/00	Headlamps for L-group vehicles other than mopeds
56/00	Moped noise
57/00	Special requirements for L-group vehicles
58/00	Requirements for omnibuses designed for hire and reward
59/00	Omnibus rollover strength
60/00	Centre high-mounted stop lamp
61/02	Vehicle marking
62/01	Mechanical connections between vehicles
63/00	Trailers designed for use in Road Trains
64/00	Heavy goods vehicles designed for use in Road Trains & B-doubles
65/00	Maximum road speed limiting for heavy goods vehicles and heavy omnibuses
66/00	Seat strength, seat anchorage strength and padding in omnibuses
67/00	Installation of lighting and light-signalling devices on three-wheeled vehicles
68/00	Occupant protection in buses
69/00	Full frontal impact occupant protection
70/00	Exhaust emission control for diesel engined vehicles
71/00	Temporary-use spare tyres
72/00	Dynamic side impact occupant protection

## Contact details for additional information

Department of Environment & Climate Change,  
PO Box A290, Sydney South 1232, T (02) 131 555

Copies of the Australian Design Rules are available from:

ADR Subscriptions, Department of Transport and Regional Services, GPO Box 594, Canberra,  
ACT 2601



**For further enquiries:**



RTA Technical Enquiries, PO Box 1120, Parramatta NSW 2124



1 300 137 302



02 9843 3821



[www.rta.nsw.gov.au](http://www.rta.nsw.gov.au) / [tech-enq@rta.nsw.gov.au](mailto:tech-enq@rta.nsw.gov.au)

---