

# **Road Transport (General) Act 2005**

## **Notice under Division 4 of Part 2 of the Road Transport (Mass, Loading and Access) Regulation 2005**

I, Mike Hannon, A/ Chief Executive of the Roads and Traffic Authority, in pursuance of Division 4 of Part 2 of the *Road Transport (Mass, Loading and Access) Regulation 2005*, hereby revoke all previous Road Train route approvals, and by this Notice, specify the areas and routes on which Road Trains that comply with the requirements of the Road Transport (Mass, Loading and Access) Regulation 2005 as set out in Parts 3, 4 and 5 of the Schedule and Schedule 4 to the Road Transport (Vehicle Registration) Regulation 1998, may be used on road or road related area or within areas specified in Part 6 of the Schedule subject to any requirements or conditions set out in the Schedule.

**Mike Hannon**  
**A/ Chief Executive**  
**Roads and Traffic Authority**

---

### **Index**

#### **Schedule**

Explanatory Note

Part 1 – Preliminary

- Citation

1.2 Commencement

1.3 Interpretations

1.4 Effect

Part 2 – Operating and travel requirements

- Operating requirements

- Travel requirements

Part 3 – Mass and dimension limits

- Maximum limits for axles and axle groups

- Maximum gross mass limits

- Maximum dimension limits

- Mass limits relating to axle spacing

- Measurement of distances for Table 1

Table 1 – Mass limits relating to axle spacing – Road trains

Part 4 – Warning signs

4.1 Road train warning signs

4.2 Warning signs not to be used in other cases

4.3 Specifications for warning signs

Part 5 – Road train standards and specifications

5.1 Compliance with standards

5.2 Power of road train hauling unit

5.3 Speed limiting

5.4 Tracking

5.5 Braking requirements for road train or component of road train

5.6 Coupling requirements

Part 6 – Approved routes

6.1 Approved routes

**Appendix 1 – Definitions**

**Appendix 2 – Road train routes in New South Wales**

Appendix 2 – Part 1, 36.5 metre road train routes in New South Wales

Appendix 2 – Part 2, 53.5 metre road train routes in New South Wales

**Route assessment procedures for road trains**

Regional contacts

---

**Schedule**

**Explanatory Note**

This Notice repeals and replaces the General Notice for the Operation of Road Trains 2 that was published in Government Gazette No. 159 at pages 12927 to 12958 and all amendments made to that Notice.

**Part 1 – Preliminary**

- **Citation**

This Notice may be cited as the **General Notice for the Operation of Road Trains 2005**.

- **Commencement**

This Notice takes effect on the date of publication.

- **Interpretations**

- Unless stated otherwise, words and expressions used in this Notice have the same meaning as those defined in Appendix 1.
- Subject to Subclause 1.3.3, a diagram appearing in this Notice is illustrative only.
- If a provision contains a diagram that is called an essential diagram, that diagram is part of the Notice.

- **Effect**

This Notice remains in force until 30 September 2010 unless it is amended or repealed earlier.

**Part 2 – Operating and travel requirements**

- **Operating requirements**

- A copy of this Notice, **excluding Appendix 2** must be carried in the driving compartment whenever the vehicle is operating as a road train and must be produced when requested to do so by a police officer or an authorised officer.
- All requirements and conditions of this Notice are to be observed when a vehicle is operating as a road train.

- A vehicle operating as a road train must clearly display warning signs at the front and rear in accordance with the requirements of Part 4 of this Notice.
- A vehicle operating as a road train must comply with the statutory requirements of the Roads Transport (General) Act 2005.
- The hauling unit and trailers or semi-trailer of a road train must be constructed to comply with the appropriate standards for registration, or the Australian Design Rules unless otherwise stated.
- All units used in a road train must be registered in a State or Territory of the Commonwealth or under the Federal Interstate Registration Scheme.
- The driver of a road train must have a driver's licence either endorsed for road trains or of a category that encompasses road trains.
- The load limits set by this Notice must not be exceeded.
- Despite Clause 5.3, a person must not drive a road train in excess of any speed limit set by law.
- The driver of a road train must travel at least 200 metres behind a long vehicle unless the driver is:
  - driving on a multi-lane road or any length of road in a built up area; or
  - overtaking.

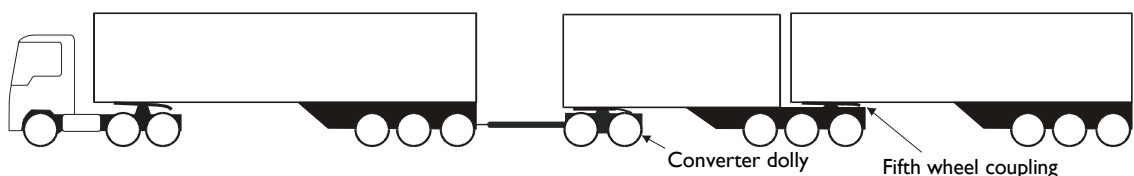
**Note** For the purpose of 2.1.10, a long vehicle means a vehicle that, together with any load or projection, is 7.5 metres long, or longer.

**- Travel requirements**

- Road trains, except those road train combinations listed below, may operate only on the approved routes listed in Appendix 2 to this Notice, and must observe any travel limitation which applies to an approved route. A person must not operate any of the road train combinations listed below except in accordance with the conditions of a permit granted, under the Road Transport (Mass, Loading and Access) Regulation 2005, or in an area or on a route not included in such Permit.

**- AB-Triple**

An AB-Triple is a vehicle combination consisting of a prime mover and semi-trailer combination, connected, by a converter dolly, to two semi-trailers connected by a fifth wheel coupling.

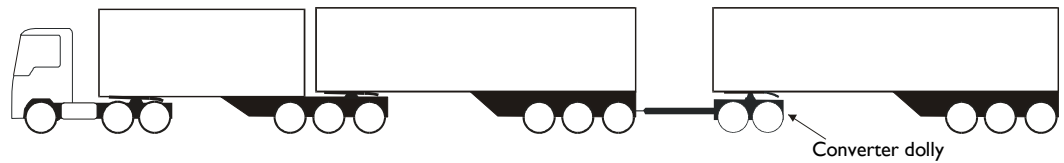


**A typical AB-Triple**

**(b) BA-Triple**

A BA-Triple is a vehicle combination consisting of:

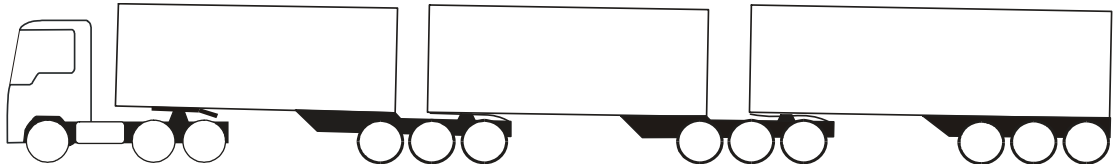
- (a) a B-Double combination connected, by a converter dolly, to a semi-trailer; or
- (b) a B-Double combination connected to dog trailer.



**A typical BA-Triple**

- **B-Triple**

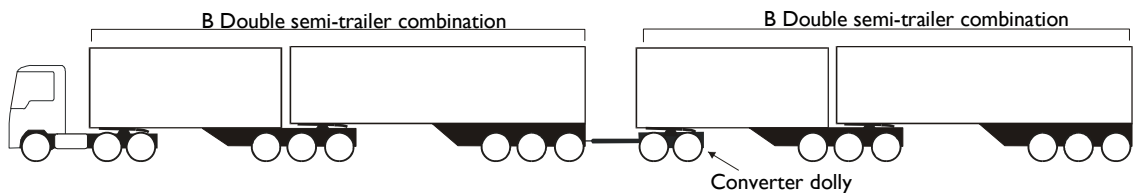
A B-Triple is a vehicle combination consisting of prime mover towing three semi-trailers connected by fifth wheel couplings.



**A typical B-Triple**

- **BB-Quad**

A BB-Quad is a vehicle combination consisting of a prime mover towing two B-Double semi-trailer combinations that have been connected by a converter dolly.



**A typical BB-Quad**

**Note**

It is the responsibility of operators seeking approval of new routes to contact Roads and Traffic Authority area offices and follow the requirements specified in the Route Assessment Guidelines for Road Trains and B-Doubles published by the RTA from time to time.

**Part 3 – Mass and dimension limits**

- **Maximum limits for axles and axle groups**

The maximum axle mass limits for a road train must be the lowest of:

- |    |  |                     |
|----|--|---------------------|
| a) | steering single axle   | – 6.0 tonnes gross  |
|    | Single axle consisting of 4 tyres  | – 9.0 tonnes gross  |
|    | tandem axle group consisting of 4 tyres  | – 11.0 tonnes gross |
|    | tandem axle group consisting of 8 tyres  | – 16.5 tonnes gross |
|    | tri-axle group consisting of 12 tyres  | – 20.0 tonnes gross |
|    | tri-axle group consisting of 6 tyres with section widths of at least 375 millimetres | – 20.0 tonnes gross |

- b) the manufacturers' mass ratings, or
- c) the sum of the mass limits for the tyres fitted to the axles and axle groups.

- **Maximum gross mass limits**

- Except as provided in Subclause 3.2.2, the maximum gross mass limit for a road train up to 36.5 metres in length must be the lowest of:
  - a) 79.0 tonnes gross,
  - b) the sum of the axle and axle group mass limits in Clause 3.1 a),
  - c) the sum of the manufacturers' mass limits for the prime mover (GVM) and the semi-trailers (GTM), or
  - d) the gross combination mass (GCM) limit specified by the prime mover manufacturer.
- The maximum gross mass limit for a road train up to 53.5 metres in length must be the lowest of:
  - a) 115.5 tonnes gross,
  - b) the sum of the axle and axle group mass limits in Clause 3.1 (a),
  - c) the sum of the manufacturers' mass limits for the prime mover (GVM) and the semi-trailers (GTM), or
  - d) the gross combination mass (GCM) limit specified by the prime mover manufacturer.

- **Maximum dimension limits**

- Hauling units and semi-trailers must comply with Third Edition Australian Design Rule 43.
- Except as provided in Subclause 3.3.5, a road train must not be more than 36.5 metres long.
- A road train must not be more than 4.3 metres high.
- An exception to Subclause 3.3.3 above to allow loading up to 4.6 metres high may be applied to a road train, subject to compliance with all of the relevant conditions of the 4.6 Metre High Vehicle Route Notice 1999.
- An exception to Subclause 3.3.2 above to allow a dimension up to 53.5 metres in length may be applied to a road train travelling on any approved route specified in Part 2 of Appendix 2.

- **Mass limits relating to axle spacing**

- For any road train, the mass limit must not exceed that determined or specified by the Authority.
- For any road train that complies with the limits determined or specified in accordance with Clause 3.4.1, the mass limits in Table 1 apply to the sum of the masses of each axle group or single axle in the distance referred to in that Table, including the axles between which the distance is measured.
- The total mass of a vehicle and any load, must not exceed 15 tonnes if the distance between any 2 axles that are not part of the same axle group is less than 2.5 m.

- The total mass of any vehicle that is being towed, and any load, must not exceed 15 tonnes if the distance between the rearmost axle of the preceding vehicle and the foremost axle of the succeeding vehicle is less than 2.5 m.

**- Measurement of distances for Table 1**

Each distance in Table 1 refers to:

- the distance from the centre of any single axle to the centre of any other single axle,
- the distance from the centre of any single axle to the centre of the furthest axle in any axle group, or
- the greatest distance between the centres of axles in any 2 axle groups.

**Table 1 – Mass limits relating to axle spacing – Road Trains**

For any road train, the sum of the axle loads of the axles in any two adjacent axle groups (or of any single axle and the axles in an adjacent axle groups) must not exceed that calculated in accordance with the formula opposite.	$M = 3L + 12.5$ where M is the mass limit in tonnes, and L is the distance in metres
--	--

**Part 4 – Warning signs**

**- Road train warning signs**

- A road train that is more than 30 metres long must have ‘ROAD TRAIN’ warning signs in accordance with this Part.
- A road train that is more than 22 metres long but not more than 30 metres long must have ‘ROAD TRAIN’ warning signs, or a ‘LONG VEHICLE’ warning sign in accordance with this Part.
- The words on a ‘ROAD TRAIN’ or ‘LONG VEHICLE’ warning sign must be in black upper case letters at least 180 millimetres high in typeface Series B (N), complying with *Australian Standard AS 1744–1975, Forms of letters and numerals for road signs*.
- If a ‘ROAD TRAIN’ or ‘LONG VEHICLE’ warning sign is in two pieces, one word must appear on one piece and the other word on the other piece.
- ‘ROAD TRAIN’ warning signs must be used in pairs and fitted horizontally, one at the front and the other at the rear of the combination concerned.
- A ‘LONG VEHICLE’ sign must be fitted horizontally to the rearmost part of the combination concerned.

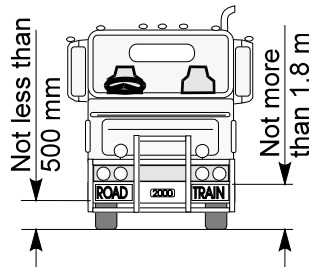
**- Warning signs not to be used in other cases**

A ‘ROAD TRAIN’ warning sign or a ‘LONG VEHICLE’ warning sign must not be used on a vehicle or combination except in accordance with this Part.

**- Specifications for warning signs**

- A warning sign must be:
  - durable, and

- b) manufactured in one or two pieces from sheet steel 0.8 millimetres thick or an alternative material of at least equivalent stiffness, unless it is designed to be fixed to the vehicle body using an adhesive.
- A warning sign must be at least 1.02 metres long by 250 millimetres high.
- A warning sign must be coated with yellow retro-reflective material (Class 1 or Class 2) which meets *Australian Standard AS 1906, Retro-reflective materials and devices for road traffic control purposes*.
- A warning sign must have a black border.
- A warning sign must show the sign manufacturer's name or logo, and the brand and class of retro-reflective material used, in block letters not more than 10 millimetres high.
- A warning sign must be mounted so that no part of it is:
  - a) more than 1.8 metres above the ground, or
  - b) less than 500 millimetres above the ground.



## Part 5 – Road train standards and specifications

- **Compliance with standards**
- A road train must comply with each applicable Australian Design Rule (ADR).
- A vehicle must comply with each standard specified in this Notice, unless the Notice is inconsistent with an ADR that applies to it.
- **Power of road train hauling unit**
- If the manufacturer of a motor vehicle forming part of a road train has not determined the GCM of the vehicle, the total mass of the combination and any load must not exceed the number of kilograms worked out using the following formula:

$$\text{Mass in kilograms} = \frac{K \times M \times R \times T}{16}$$

where:

K means:

- a) 0.055 if a single drive axle is fitted to the motor vehicle,
- b) 0.053 if a single drive tandem axle is fitted to the motor vehicle, or
- c) 0.051 if a dual drive tandem axle group is fitted to the motor vehicle,

M means the number of tyre revolutions per kilometre as specified by the tyre manufacturer for the tyres fitted to the driving axle or axles,

R means the overall gear reduction between engine and drive wheels,

T means the maximum engine net torque in Newton-metres.

- **Speed limiting**

- A road train must comply with the speed limiting requirements of Third Edition Australian Design Rule 65.
- A road train must be speed limited so that it has a maximum road speed capability of 90 km/h.

- **Tracking**

When travelling in a straight line on a level, smooth surface, all units in a road train must track in the path of the hauling unit without shifting or swerving more than 100 mm either side of the path of the hauling unit.

- **Braking requirements for road train or component of road train**

- Braking Requirements for a Road Train or component of a Road Train

The braking requirements in this Part apply in addition to the braking system requirements that apply to all heavy vehicles.

These requirements do not apply to a road train that has a length of 19 metres or less, or to a vehicle used in a road train of that length.

- Braking System Design for a Hauling Unit

A motor vehicle that:

- a) would not otherwise be required to comply with an ADR relating to braking,
- b) is used in a road train,

must comply with the requirements specified in either Second Edition ADR 35A or Third Edition ADR 35 for the performance of:

- a) the service brake system,
- b) the secondary brake system, and
- c) the parking brake system.

- Braking system design for a trailer

A trailer that is used in a road train, and is not otherwise required to comply with an ADR relating to braking, must comply with requirements specified in Second or Third Edition ADR 38 for the performance of:

- a) the service brake system,
- b) the emergency brake system, and
- c) the parking brake system.

A road train trailer to which this Part applies need not be fitted with a mechanical parking brake if it carries wheel chocks that provide a

performance equivalent to the performance requirement of the parking brake system.

- Air brakes—Requirements for hauling unit

If a road train is fitted with brakes that operate using compressed air, the braking system of the hauling unit must meet the requirements of this Part when:

- a) the pressure is measured in an 800 millilitre vessel connected by a 2 metre pipe with a bore of approximately 13 millimetres to the coupling head of the braking system,
- b) the initial air pressure is not less than:
  - i) the arithmetic average of the maximum and minimum pressures in the operating pressure range specified by the vehicle manufacturer, or
  - ii) if there is no manufacturer's specification—650 kilopascals.

The pressure must reach at least 420 kilopascals within 400 milliseconds after the rapid and complete application of the foot-operated control of the braking system.

After the brakes have been fully applied, the pressure must fall within half a second of the release of the foot-operated control to 35 kilopascals.

- Air brakes—Least favoured chamber

The pressure in the least favoured chamber of the braking system of a road train whose brakes operate using compressed air must meet the requirements of this subclause when the initial air pressure is not less than:

- a) the arithmetic average of the maximum and minimum pressures in the operating pressure range specified by the manufacturer of the vehicle, or
- b) if there is no manufacturer's specification—650 kilopascals.

The pressure must reach at least 420 kilopascals within 1.5 seconds of the rapid and complete application of the foot-operated control.

After the brakes have been fully applied, the pressure must fall to 35 kilopascals or the pressure at which the friction surfaces cease to contact each other within 1.5 seconds of the release of the foot-operated brake control on a road train.

<b>Note:</b>	The 'least favoured chamber' means the brake chamber with the longest line to the treadle valve in the prime mover.
--------------	---

- Recovery of air pressure for brakes

The air pressure in each air brake reservoir in a road train must recover to at least 420 kilopascals within one minute after 3 full brake applications have been made within a 10 second period if, before the 3 brake applications have been made:

- a) the engine is running at maximum speed, and
  - b) the governor cut-in pressure is no higher than:
    - i) the pressure recommended by the manufacturer, or
    - ii) if there is no manufacturer's recommendation—550 kilopascals
- the initial air pressure in the storage tanks of the vehicles is not less than:
  - i) the arithmetic average of the maximum and minimum pressures in the operating pressure range specified by the vehicle manufacturer, or
  - ii) if there is no manufacturer's specification—650 kilopascals.
- Air Supply for brakes
 

A road train that uses compressed air to operate accessories must have:

  - a) sufficient air compressor capacity and air receiver volume to ensure that the operation of accessories does not adversely affect brake performance, and
  - b) a compressed air system built to ensure that the brake system is preferentially charged.

- Brake line couplings

Brake line couplings on the same part of a vehicle in a road train must not be interchangeable.

Couplings must be polarised in accordance with *Australian Standard AS D8–1971, Hose couplings for use with vacuum and air-pressure braking system on prime movers, trailers and semi-trailers*, if the hoses used with the brake couplings are used for the same purpose as the hoses described in the Australian Standard.

- Simultaneous parking brake application

If the parking brake of a motor vehicle in a road train is applied, the parking brakes of any attached trailer must also be applied automatically.

#### 5.5.10 Capacity of air reservoirs

The capacity of the air storage tanks of a motor vehicle used in a road train must be at least 12 times the volume of all the brake activation chambers on the vehicle.

The capacity of the air storage tanks of a trailer used in a road train must be at least 8 times the volume of all brake activation chambers on the trailer.

- **Coupling requirements**

- Coupling requirements

The coupling requirements for road trains listed in this section apply in addition to coupling requirements that apply to all heavy vehicles.

These requirements do not apply to a vehicle, coupling or part of a coupling that is used in a road train that has a length of 19 metres or less.

- Fifth wheel couplings

A fifth wheel coupling used to connect a towing vehicle to a semi-trailer used in a road train must not be built with a pivot that allows a semi-trailer to roll relative to the towing vehicle.

The above does not apply to a fifth wheel coupling if:

- a) the semi-trailer design requires torsional stresses to be minimised,
- b) the roll axis of the fifth wheel coupling is above the surface of the coupler plate, and
- c) the degree of rotation allowed around the roll axis of the fifth wheel coupling is restricted to prevent roll instability.

A turntable used in a vehicle that forms part of a road train must be marked with:

- a) the name or trademark of the manufacturer, and
- b) the D-value rating,

of the turntable.

A trailer with only one axle group or a single axle (except a semi-trailer or converter dolly) that is used in a road train must not have a coupling fitted at its rear.

- Selection of fifth wheel couplings

A fifth wheel coupling used in a road train must have a D-value that accords with *Australian Standard AS 1773–1990, Articulated vehicles – Fifth wheel assemblies*.

A turntable used in a road train must have a D-value of at least 140 kilonewtons (14.3 tonnes) for a prime mover and 162 kilonewtons (16.5 tonnes) for a converter dolly, in accordance with *Australian Standard AS 1773–1990, Articulated vehicles – Fifth wheel assemblies*.

A fifth wheel coupling used in a road train that is built for a 50 millimetre or 90 millimetre kingpin must meet the dimensional requirements in *Australian Standard AS 1773 – 1990, Articulated vehicles – Fifth wheel assemblies*.

A fifth wheel coupling used in a road train that is built for a 75 millimetre kingpin must be compatible with the kingpin described in Clause 5.6.7

- Determining the D-value of a fifth wheel coupling

When testing a fifth wheel coupling built for a 75 millimetre kingpin used in a road train to determine whether its D-value meets the requirements of Clause 5.6.3:

- a) the closed jaw diameter must not wear more than 2.6 millimetres,

- b) the jaw thickness must not wear more than 3 millimetres.
- Mounting of fifth wheel couplings on a road train
 

A fifth wheel coupling must be mounted on a prime mover or a semi-trailer used in a road train in accordance with the requirements of *Australian Standard AS 1771–1987, Installation of fifth wheel and turntable assemblies*.
- Branding of fifth wheel couplings
 

A fifth wheel coupling on a vehicle manufactured on or after 1 July 1991, forming part of a road train must be clearly and permanently marked in accordance with *Australian Standard AS 1773–1990, Articulated vehicles – Fifth wheel assemblies*, with the:

  - a) the name or trademark of its manufacturer,
  - b) its D-value rating, and
  - c) its nominal size.

- Selection of kingpins
 

A kingpin used in a road train must:

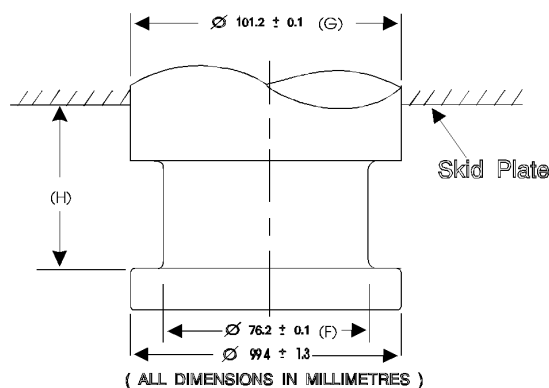
  - a) be a 50 millimetre, 75 millimetre or 90 millimetre kingpin, and
  - b) have a D-value of at least 162 kilonewtons (16.5 tonnes) that accords with *Australian Standard AS 2175–1990, Articulated vehicles – Kingpins*.

A 50 millimetre or 90 millimetre kingpin used in a road train must:

- a) be built to meet the dimensional requirements in *Australian Standard AS 2175–1990, Articulated vehicles – Kingpins*, and
- b) not be worn away more than is recommended by that Australian Standard.

A 75 millimetre kingpin used in a road train must:

- a) be built to meet the dimensions specified in the essential diagram below, and
- b) not be worn away more than is specified in 5.6.8 a), b) or c).



- When testing a 75 millimetre kingpin described in the essential diagram above to determine whether its D-value meets those requirements:

- a) diameter F must not wear more than 3 millimetres,
- b) diameter G must not wear more than 2 millimetres, and
- c) height H must not wear more than 2.3 millimetres.

- Attachment of kingpins

A kingpin on a trailer used in a road train must be attached in accordance with:

- a) the manufacturer's recommendations and instructions, or
- b) the guidelines detailed in *Australian Standard AS 2175–1990, Articulated vehicles – Kingpins*.

5.6.10 Branding of kingpins

A kingpin used in a trailer manufactured on or after 1 July 1991 that forms part of a road train must be clearly and permanently marked on the lower circular face of the kingpin in accordance with *Australian Standard AS 2175–1990, Articulated vehicles – Kingpins*, with:

- a) the name or trademark of its manufacturer,
- b) its D-value, and
- c) its nominal size.

5.6.11 Selection of couplings and drawbar eyes

A drawbar-type coupling or a drawbar eye used in a road train must:

- a) be a 50 mm pin type,
- b) have a D-value of at least 186 kilonewtons (19 tonnes) that accords with *Australian Standard AS 2213–1984, 50 mm pin type couplings and drawbar eyes for trailers*,
- c) be built to the dimension specified in that Australian Standard, and
- d) not be worn away more than is recommended in that Australian Standard.

5.6.12 Attachment of couplings and drawbar eyes

The drawbar-type coupling or drawbar eye in a road train must be built and positioned so that:

- a) when the road train is moving, the drawbar can move at least 15 degrees upwards or downwards from the position it occupies when the road train is parked on level ground,
- b) the pivot point of the coupling is not more than 300 mm forward of the rear of the trailer to which it is attached, and
- c) it is at a height of at least 800 mm, but not more than 950 mm, when the road train is unloaded and parked on level ground.

5.6.13 Branding of couplings and drawbar eyes

A drawbar-type coupling or a drawbar eye on a vehicle manufactured on or after 1 July 1991 forming part of a road train must be clearly and permanently marked in accordance with

*Australian Standard AS 2213 – 1984, 50 mm pin type couplings and drawbar eyes for trailers, with:*

- a) the name or trademark of manufacturer,
- b) its D-value rating.

#### 5.6.14 Tow coupling overhang

The tow coupling overhang of a motor vehicle, other than a prime mover, used in a road train must not be more than the greater of:

- a) 30% of the distance from the centre of the front axle to the centre of the axle group or single axle at the rear of the vehicle,
- b) 2.7 metres.

The tow coupling overhang of a semi-trailer, or a dog trailer consisting of a semi-trailer and converter dolly, used in a road train must not be more than 30% of the distance from the point of articulation to the centre of the axle group or single axle at the rear of the vehicle.

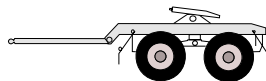
The tow coupling overhang of any other dog trailer used in a road train must not be more than 30% of the distance from the centre of the front axle group or single axle to the centre of the axle group or single axle at the rear of the vehicle.

## Part 6 – Approved routes

- Approved routes
- A road train may operate only on approved routes and in road train areas listed in Appendix 2.
  - 6.1.2 The travel restrictions and conditions which apply to an approved route or area must be observed.

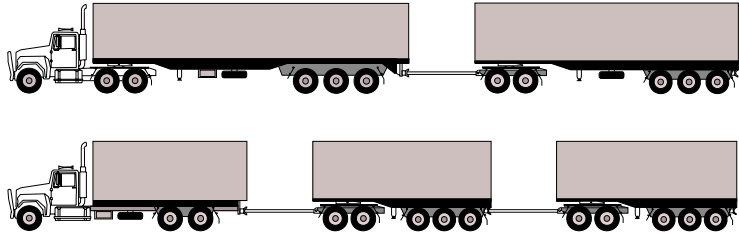
## Appendix 1 – Definitions

- ‘authorised officer’** means a person employed by the RTA as an enforcement officer;
- ‘combination’** means a group consisting of a motor vehicle connected to one or more trailers;
- ‘converter dolly’** means a trailer with one axle group or single axle and a fifth wheel coupling designed to convert a semi-trailer into a dog trailer;



**Typical converter dolly**

- ‘prime mover’** means a motor vehicle built to tow a semi-trailer;
- ‘road train’** means a combination, other than a B-Double, consisting of a motor vehicle towing at least two trailers (counting as one trailer a converter dolly supporting a semi-trailer);



### Typical road trains

**‘semi-trailer’** means a trailer that has:

- one axle group or single axle towards the rear; and
- a means of attachment to a prime mover that would result in some of the load being imposed on the prime mover;

**‘standards for registration’** means the standards specified by the Roads and Traffic Authority for vehicle registrations;

**‘trailer’** means a vehicle that is built to be towed, by a motor vehicle, but does not include a motor vehicle being towed.

## Appendix 2 – Road train routes in New South Wales

### Appendix 2 – Part 1, 36.5 metre road train routes in New South Wales

RT	Road train area	<p>Road trains may be operated for the purpose of transporting any goods or livestock west of a line taken from the NSW/Qld border at Mungindi through Collarenebri, Walgett, Byrock, Nyngan, Cobar and Ivanhoe to the NSW/Vic border at Wentworth. [The road train area is marked on the Road Train and B-double route map]</p> <p>The urban areas of Broken Hill, Cobar, Euabalong and Euabalong West are <u>excluded</u> from road train use <u>except on the following routes:</u></p> <ul style="list-style-type: none"> <li>- <b>Broken Hill</b></li> <li>- Barrier Hwy – Rakow St – William St – Silver City Hwy</li> <li>- Silver City Hwy – Pinnacles Rd – Kanandah Rd – Ryan St – Creedon St</li> <li>- Kanandah Rd – Kanandah PI [entire length, no through road]</li> <li>- Pinnacles Rd to Saleyards</li> <li>- Creedon St between Rakow St and Gaffney St</li> <li>- Iodide St between William St and Crystal St</li> <li>- Argent St between Iodide St and Barrier Hwy</li> <li>- From junction of Bonanza and Patton Streets thence Patton St – Comstock St – Eyre St – Holten Dr to the junction with Menindee Road</li> <li>- <b>Cobar</b></li> <li>- Barrier Hwy (Marshall St)</li> <li>- Kidman Way from Nymagee road (MR61) and Bourke road (MR421)</li> <li>- Lewis St (north of the Barrier Hwy) thence Louth Rd</li> <li>- Barton St (north of the Barrier Hwy) thence Frederick St – Kidman Way</li> <li>- Lewis St (south of Barrier Hwy) thence Blakey St – Woodiwiss St – Lerida St to the Cobar Airport turnoff</li> <li>- Bathurst St (from Barrier Hwy) – Becker St – Monaghan St to access the Caltex Service Station</li> <li>- Murray St (from Barrier Hwy)- Prince St – Bourke St to access the Mobil Service Station</li> <li>- Murray St (from Barrier Hwy) – Becker St – Bourke St to access the Shell Service Station</li> <li>- Murray St (from Barrier Hwy) to Woodiwiss Ave</li> <li>- South Railway Parade (entire length)</li> <li>- Old Bourke Road (entire length)</li> <li>- All streets in the East Cobar Industrial Estate east of Old Bourke St</li> <li>- <b>Euabalong</b></li> </ul>
----	-----------------	--

			<ul style="list-style-type: none"> <li>- Hercules St from Euabaolong – Lake Cargellico road (MR423) to Euabalong – Gunebang road (MR411)</li> <li>- Robinson – Lachlan – Murrin – Mudda Streets</li> <li>- <b>Euabalong West</b></li> <li>- Euabba – Murrin Streets</li> </ul>
RT		<b>Access on State Forest roads within the Pilliga West State Forest</b>	Myall road, from the Coonamble Shire boundary [note that <b>ALL of Coonamble Shire is approved for road train operations</b> ], to the junction with Ceelnoy Road. Thence via Wooleybah Road to the junction with Taylors Road. Thence via Taylors Road to the junction with Stumpy Lane and continuing via Stumpy Lane to the junction with Langholm Lane.
RT		<b>Cobar Shire Council</b>	<p>All roads within the Cobar Shire Council with the following conditions applying:</p> <ul style="list-style-type: none"> <li>- urban access routes in Cobar, Euabalong and Euabalong West as per notes 2, 3 &amp; 4 of "Road Train Area" section.</li> <li>- Travel permitted in dry weather only on all unsealed roads.</li> </ul>
RT		<b>Coonamble Council area</b>	All rural local roads within Coonamble Council area including the following State Forest roads: Wangan Rd and Margos Rd from Pilliga Rd eastward towards Western Way
RT		<b>Gilgandra Shire Council</b>	<p>All local roads within the Gilgandra Shire Council area to the west of the Newell Highway.</p> <p>Travel is not permitted during the following hours on school days:  7:45 am to 9:00 am  3:30 pm to 4:45 pm</p> <p>There is no access from local roads to the Newell Highway north of Gilgandra.</p> <p>Restrictions apply on the Newell Highway south of Gilgandra.</p> <p>Routes will operate from 1 November 2005 to 31 December 2005.</p>
RT		<b>Lachlan Shire Council</b>	All local, regional and state roads within Lachlan Shire.
RT		<b>Moree Plains Council area</b>	<p>All council roads within the Moree Plains Council area</p> <p>Travel in Moree is permitted only on approved routes as listed on the Moree town map on the Road Train Map</p>
RT		<b>Narrabri Shire</b>	<p>All rural roads west of the Newell Highway (SH17) within Narrabri Shire, <b>with the exception of the following roads:</b></p> <ul style="list-style-type: none"> <li>- Shire Road 46 (Doreen Lane) from State Hwy 29 at Merah North to Shire Road 4 (Spring Plains Road).</li> <li>- Shire Road 31 (Wee Waa to Yarrie Lake) from Main road 127 to the junction with Shire Road 29 (Narrabri to Yarrie Lake).</li> <li>- Shire Road 29 (Narrabri to Yarrie Lake) from the junction with Shire Road 31 (Wee Waa to Yarrie Lake) to the entrance to the "Corglan" facility (approx 6km west of Narrabri).</li> <li>- Shire Road 207 (Trucking Yards Lane) from the Wee Waa Silos to the intersection with Main Road 343 (Wee Waa to Burren Junction).</li> <li>- Main Road 127 (Wee Waa to Pilliga) from Short Street, Wee Waa to the junction with Shire Road 247.</li> </ul>

			<ul style="list-style-type: none"> <li>- Main Road 127 (Narrabri to Wee Waa) from the junction with Shire Road 232 (Tulladunna Lane) to Maitland St, Wee Waa)</li> <li>- Refer to general route listing for urban streets in Narrabri.</li> </ul>
RT	<b>Narromine Shire Council</b>	<p>All local and regional roads within Narromine Shire Council area that are situated west of the Newell Highway and outside the town areas of Narromine and Trangie.</p> <p>Within the town of Narromine, travel is restricted to the following roads:</p> <ul style="list-style-type: none"> <li>• Existing Road Train Routes;</li> <li>• Cathundril Street from Dandaloo Street to A'Beckett Street;</li> <li>• Warren Road from the Mitchell Highway to the Narromine/Eumungerie Road;</li> <li>• Old Backwater Road from Dandaloo Street to Fifth Avenue;</li> <li>• Nellie Vale Road from Dandaloo Street to Algalah Street; and</li> <li>• Dappo Road from Algalah Street to A'Beckett Street.</li> </ul> <p>Within the town of Trangie, travel is restricted to the following roads:</p> <ul style="list-style-type: none"> <li>• Existing Road Train routes;</li> <li>• Mungery Street;</li> <li>• Harris Street from Campbell Street to Bimble Box Lane;</li> <li>• Campbell Street from Harris Street to Nicholas Street;</li> <li>• Bimble Box Lane from Mungery Street to Mitchell Highway; and</li> <li>- • Weemabah Street from the Mitchell Highway to Trangie Rural Traders.</li> </ul> <p>Routes will operate from 1 November 2005 to 31 January 2006.</p> <p>Travel is not permitted on the following roads between Narromine and Trangie, for that part of them that lie between the Mitchell Hwy and the railway line:</p> <ul style="list-style-type: none"> <li>• "Silverdale" access;</li> <li>• Herrings Lane; and</li> <li>• Mungeribar Lane.</li> </ul> <p>Travel is not permitted on the following roads between Narromine and Tomingley West, for that part of them that lie between the Peak Hill Railway Road and the railwayline:</p> <ul style="list-style-type: none"> <li>• Haberworth Lane;</li> <li>• Hargreaves Road;</li> <li>• Fairview Road;</li> <li>• Tinks Lane; and</li> <li>• Wyanga Road.</li> </ul> <p>There is no access from local roads to the Newell Highway South of Dubbo.</p>	
RT	<b>Walgett Shire Council</b>		<ul style="list-style-type: none"> <li>- All dedicated and classified roads within the Walgett Shire, <b>excluding</b> all urban streets not previously approved for road train</li> </ul>

			access, and all load limited bridges - Urban streets in Burren Junction approved for use <b>except the following streets:</b> - Alma Street, west of Waterloo Street - Trafalgar Street, south of Inkerman Street		
Type	Road No	Road Name	Starting point	Finishing point	Conditions
RT	9012	Shire Road 12 (Walgett Shire)	Burren Junction– Pokataroo road (MR329) approx 10 km south-west of Sesbana	Shire Road 13 (Walgett Shire)	
RT	9013	Shire Road 13 (Walgett Shire)	Shire Road 12	Shire Road 59	
	9014	Shire Road 14 (Walgett Shire)	Shire Road 13	Burren Junction– Pokataroo road (MR329) near Oreel	
RT	9029	Shire Road 29, Narrabri	Goobar St, Narrabri	Hannaford’s Depot approx 6 km west of Narrabri	
RT	9030	Shire Road 30 (Walgett Shire)	Come-by-Chance	Castlereagh Hwy (SH18) 31km south of Walgett	
RT	9031-2-3	Shire Roads 31, 32 and 33 (Walgett Shire)	Carinda–Quambone road (MR202), Carinda	Castlereagh Hwy (SH18) 25km south of Walgett	
RT	9059	Shire Road 59 (Walgett Shire)	Shire Road 13	Shire Road 14	
RT	9009	Shire Road 9 (Walgett Shire)	Burren Junction– Pokataroo road (MR329) approx 10 km south-west of Sesbana	Rowena	

		Warren Shire Council	Roads		
Type	Road No	Road Name	Starting point	Finishing point	Conditions
RT	SR43	Armatree Rd	Intersection Pine Clump Soldiers road	Warren/ Gilgandra Shire boundary	
RT		Banks St, Warren	Cook St	Bruce St	
RT	SR27	Bealbah-Bullagreen	MR202	MR7516	
RT	SR29	Belah View	Bealbah-Bullagreen road (SR27)	End of road	
RT		Bloomfield ave, Warren	Thomas Sullivan Crescent	Entire length	
RT	SR58	Bogan Rd	SR59 Tottenham road	SR60 Nyngan-Dandaloo road	
RT	SR9	Booka Rd	MR424	MR7516	

RT		Bruce St, Warren	Zora St	Banks St	
RT	SR68	Bundemar	Oxley Hwy (SH11)	Warren/ Narromine Shire boundary	
RT	SR65	Canoba Rd	SR91 Industrial access road	Warren/ Bogan Shire boundary	
RT	7516	Carinda-Brewarrina Rd	Intersection with Brewon Turnoff	Billybingbone Bridge	
RT	SR33	Castlebar Lane	Oxley Hwy (SH11)	Bundemar Road (SR68)	
RT	SR54	Cathundral-Bogan Rd	Oxley Hwy (SH11)	Warren/ Narromine Shire boundary	
RT	SR54	Cathundral-Bogan road	Warren/ Narromine Shire boundary	SR60 Nyngan-Dandaloo road	
RT	SR50	Christies Lane	SR43 Armatree road	Warren/ Coonamble Shire boundary	
RT	SR44	Coburg/ Charlieville	MR202	End of road Charlieville Gate	
RT		Colley place, Warren	Thomas Sullivan Crescent	Entire length	
RT	SR35	Collie-Bourbah Rd	Village of Collie	Warren/ Gilgandra Shire boundary	
RT		Cook St, Warren	Zora St	Mabel St	
RT	424	Coolabah-Quambone	Intersection SR98 Nyngan-Mundadoo	MR333	
RT		Coonamble St, Warren	Oxley Hwy (SH11)	Entire length (to Marthaguy Creek)	
RT	SR87	Cremorne Rd	SR59 Tottenham road	End of road at Channel	
RT	SR25	Cullemburrawang Rd	MR7515	MR202	
RT	SR41	Dicks Camp Cemetery Rd	Oxley Hwy (SH11)	End of Dicks Camp House	
RT	SR26	Drunglear Rd	MR202	End of road Drunglear	
RT	SR21	Duffity Rd	SR23 Mt Harris-Gradgery road	End of road Bibberjibbery Gate	
RT	SR69	Eenaweena-Mullengudgery road	Oxley Hwy (SH11)	End of Hortons Ramp	
RT	SR64	Ellengerah road	Warren	Warren/ Narromine Shire	
RT	SR86	Ellerslie Rd	SR27 Bealbah-Bullagreen	End of road Ellerslie Gate	
RT	SR61	Elsinore Rd	SR59 Tottenham road	End of road Zanzibar Gate	
RT	SR45	Emby West Rd	Warren/ Coonamble Shire boundary	End of road Emby West Gate	
RT	SR36	Gibson Way	MR333	Warren/ Coonamble Shire boundary	

RT	SR22	Gillendoon-Mt Harris Rd	Oxley Hwy (SH11)	End of road Gillendoon House	
RT	SR79	Greentree Rd	SR35 Collie-Bourbah road	End of road Freeths Ramp	
RT	SR32	Gunnegaldra Rd	Industrial access road (SR91)	End of road Gunnegaldra Ramp	
RT	SR95	Gunningbar Rd	SR65 Canonba road	End of road Gunningbar West	
RT	SR24	Hatton Lane	MR202	End of road Clontarf Gate	
RT	SR63	Heatherbrae Rd	SR59 Tottenham road	End of road Rosedale Ramp	
RT	SR5	Illabunda Rd	Lemongrove Road	Warren/ Bogan Shire boundary	
RT	SR91	Industrial Access Rd, Warren Shire	Oxley Hwy (SH11), south of Warren	Oxley Hwy (SH11), North of Warren	
RT	SR90	Inglewood Rd, Warren Shire	Collie-Bourbah Rd (SR35)	Warren/ Gilgandra shire boundary	
RT	SR10	Killaloo Lane	MR424	End of road Killaloo Ramp	
RT	SR17	Lamphs Rd	MR333	End of road Lamphs Ramp	
RT	SR94	Lauriston Rd	MR202	End of road Lauriston	
RT	SR89	Leeches Creek Rd, Warren Shire	Inglewood Rd	Gilgandra/ Warren shire boundary	
RT	SR12	Lemongrove Rd	MR333	MR424	
RT		Mabel St, Warren	Stafford St	Cook St	
RT	SR40	Merrigal-Gular Rd	Warren/ Gilgandra Shire boundary	Intersection SR75 Pine Clump Soldiers road	
RT	SR23	Mt Harris-Gradery Rd	Mt Harris-Kiameron (SR81)	MR202	
RT	SR81	Mt Harris-Kiameron Rd	MR333	End of road Kiameron Ramp	
RT	SR62	Mulla Rd	Oxley Hwy (SH11)	Warren/ Bogan Shire boundary	
RT	SR20	Nellievale Rd	MR333	End of road Nellievale Gate	
RT	SR60	Nyngan-Dandaloo Rd	Warren/ Bogan Shire boundary	Warren/ Narromine Shire boundary	
RT	SR98	Nyngan-Mundadoo Rd, Warren Shire	Coolabah-Quambone Rd (RR424)	Warren/ Bogan shire boundary	
RT	SR51	Oakley Rd	Oxley Hwy (SH11)	SR34 Pleasant View Lane	
RT	SR1	Oxley Rd	Warren-Carinda road (MR333)	Oxley Bridge	Road train travel <b>not permitted</b> over Oxley Bridge
RT	SR75	Pine Clump Soldiers Rd	MR7515	SR40 Merrigal-Gular	

RT	SR3	Pine Ridge-Canoba Rd	MR333	Warren/ Bogan Shire boundary	
RT	SR34	Pleasant View Lane	Collie-Bourbah road (SR35)	End of road	
RT	SR88	Quigley-Carroll Rd	SR54 Cathundral-Bogan Gate road	End of road Muntham Gate	
RT	SR99	Radnedge Rd	Oxley Hwy (SH11)	End of road	
RT		Railway Parade, Warren	Carinda Rd (RR333)	Silo Rd	
RT	SR83	Rifle Range Rd	Oxley Hwy (SH11)	SR64 Ellengerah road	
RT	SR28	Rothsay Rd, Warren	Warren-Quambone Rd (RR202)	"Nangheri" property	
RT		Silo Row, Warren	Railway Parade	Industrial Access Rd	
RT	SR72	Snakes Lane	SR66 Wambianna road	End of road Ewenmar Gate	
RT		Stafford St, Warren	Zora St	Mabel St	
RT	SR4	Sullivans Rd	Nyngan to Mundadoo road (SR98)	End of road Yamba Gate	
RT	SR7	Sunshine Rd, Warren Shire	Coonamble St, Collie	Warren/ Gilgandra shire boundary	
RT	SR56	Tabratong Lane	SR58 Bogan road	SR60 Nyngan-Dandaloo road	
RT		Thomas Sullivan Crescent, Warren	Silo Row	Silo Row	
RT	SR53	Thornton Rd	SR59 Tottenham road	SR54 Cathundral-Bogan road	
RT	SR59	Tottenham Rd, Warren Shire	Mitchell Hwy (SH7) at Nevertire	Warren/ Lachlan shire boundary at Bogan River	
RT	SR73	Udora Rd, Warren Shire	Oxley Hwy (SH11)	End of road at Jingara	
RT	066	Wambianna Rd, Warren Shire	Oxley Hwy (SH11), Warren	Warren Shire/ Narromine Shire boundary	
RT	7515	Warren-Coonamble Rd	MR202	Warren/ Coonamble Shire boundary	
RT	SR46	Widgeree Rd	SR44 Cathundral-Bogan road	Warren/ Narromine Shire boundary	
RT	SR30	Wonbobbie Rd	Oxley Hwy (SH11)	MR7515	
RT	SR93	Yarrandale Rd, Warren Shire	Warren-Quambone Rd (RR202)	5.2 km from Warren-Quambone Rd (RR202)	
RT	SR38	Yungundi Rd (previously known as Collie-Balldoran Rd), Warren Shire	Collie Rd	Gilgandra/ Warren shire boundary	
RT		Zora St, Warren	Oxley Hwy (SH11)	Stafford St	



## General Route Listing

Type	Road No	Road Name	Starting point	Finishing point	Conditions
RT		Abattoir Rd, Deniliquin	Barham Rd	Saleyards Rd	
RT	SR2	Abattoirs Rd	SH17 Newell Highway	Road End- Total Length- 240m	
RT	SR2	Abattoirs Rd, Forbes Shire	Newell Hwy (SH17)	Entire length (total length is 240 metres)	
RT		Abbotts Tank Rd (Balranald Shire)	Sturt Highway (SH 14)	Euston Prungle Rd	Travel is permitted in dry weather only.
RT		A'Beckett St, Narromine	Minore St	Terangion St	
RT	SR 104	Adavale Lane, Parkes Shire	Shire Rd 105 Ascot Lane	Shire Rd 76 (Bogan Lane)	<ol style="list-style-type: none"> <li>1. Speed Restrictions 80km/h</li> <li>2. Access prohibited 7:30am- 9am and 3pm- 4:30pm school days</li> <li>3. Daylight hours only (B- Doubles Exempt)</li> <li>4. During periods of wet weather, Parkes Shire Council to be consulted regarding possible road closures</li> </ol>
RT	SR128	Alagala Rd, Parkes Shire	Main Road 57 (Tottenham Rd)	Shire Road 162A (Terowie Rd- part)	<ol style="list-style-type: none"> <li>1. Speed Restrictions 80km/h</li> <li>2. Access prohibited 7:30am- 9am and 3pm- 4:30pm school days</li> <li>3. Daylight hours only (B- Doubles Exempt)</li> <li>4. During periods of wet weather, Parkes Shire Council to be consulted regarding possible road closures</li> </ol>

Type	Road No	Road Name	Starting point	Finishing point	Conditions
RT		Alcheringa Drive, Buronga	Melaleuca Ave	Gol Gol North Rd	
RT		Arnolds Lane, Jerilderie	Jerilderie/ Berigan Rd (MR564)	2km west of Jerilderie/ Berrigan Rd (MR564)	
RT		Arumpo Rd, Buronga	SiverCity Hwy (SH22)	Eastern boundary of Shire boundary near Mungo Lodge	
RT	SR105	Ascot Lane, Parkes Shire	Shire Rd 1158 (Bruie Plains Rd)	Shire Rd 104 (Adavale Lane)	<ol style="list-style-type: none"> <li>1. Speed Restrictions 80km/h</li> <li>2. Access prohibited 7:30am- 9am and 3pm- 4:30pm school days</li> <li>3. Daylight hours only (B-Doubles Exempt)</li> <li>4. During periods of wet weather, Parkes Shire Council to be consulted regarding possible road closures</li> </ol>
RT	203	Avondale Rd, Gilgandra Shire	Newell Hwy	East Coonamble Rd	<ol style="list-style-type: none"> <li>1. Travel is not permitted during the following hours on school days 7:45am- 9:00am 3:30-4:45pm</li> <li>2. There is no road train access from local roads to the Newell Highway north of Gilgandra</li> </ol>
RT		Back Hillston Rd, Carrathool Shire	Cahills Rd	Melbergen Rd	
RT		Back Hilston Rd, Carrathool Shire	CahillsRd	Melbergen Rd	

Type	Road No	Road Name	Starting point	Finishing point	Conditions
RT	SR126	Back Peak Hill Rd, Parkes Shire	Main Rd 348 (Tullamore Rd)	Shire Rd 142 (Curra Lane)	<ol style="list-style-type: none"> <li>1. Speed Restrictions 80km/h</li> <li>2. Access prohibited 7:30am- 9am and 3pm- 4:30pm school days</li> <li>3. Daylight hours only (B-Doubles Exempt)</li> <li>4. During periods of wet weather, Parkes Shire Council to be consulted regarding possible road closures</li> </ol>
RT	126	Back Peak Hill Rd, Parkes Shire	Shire Rd 144 (Belah Park Rd)	Shire Rd 166 (Porters Lane)	<ol style="list-style-type: none"> <li>1. Speed Restrictions 80km/h</li> <li>2. Access prohibited 7:30am- 9am and 3pm- 4:30pm school days</li> <li>3. Daylight hours only (B-Doubles Exempt)</li> <li>4. During periods of wet weather, Parkes Shire Council to be consulted regarding possible road closures</li> </ol>
RT		Back Whitton Road (Leeton Shire)	Murrami Road South (Leeton shire)	300m east to the entrance to the Gogeldrie Grain Storage Silos	Travel not permitted during the following hours on school days: 7.00am to 9.30am 3.30pm to 5.00pm
RT	67	Balranald–Ivanhoe Rd	Sturt Hwy (SH14), Balranald	Cobb Hwy (SH21), Ivanhoe	
RT	329	Baradine–Grawan Bridge Rd	Burren Junction–Warren road (MR619), Burren Junction	Gwydir Hwy (SH12) near Grawan Bridge	

Type	Road No	Road Name	Starting point	Finishing point	Conditions
RT		Baranbar St, Narrabri	Mooloobar St	Goobar St	
RT		Bardber Rd, Griffith	Brogden Rd	Twaddell Rd	
RT		Barham Rd, Deniliquin	Ochertyre St	Rice Mill Rd	
RT	341	Barham- Deniliquin Road	Barham-Maude Road (MR319)	Thule Creek Bridge (Murray Shire boundary)	
RT		Barham- Deniliquin road (Wakool Shire)	Barham-Maude road (MR319)	Thule Creek Bridge (boundary Murray Shire)	
RT	319	Barham-Maude Road, Wakool Shire	Barham-Deniliquin Road (MR341)	Truck Stop situated 5km north of Barham	
RT		Barnes Rd (Berrigan Shire)	South Coree Rd	Conargo Shire boundary	
RT	8	Barrier Hwy	Mitchell Hwy (SH7), Nyngan	SA border at Cockburn	Via Cobar, Wilcannia, Broken Hill as per urban access routes listed in notes 1 & 2 of Road Train Area
RT		Barwan St, Narrabri	Killarney St	Fitzroy St,	1. Max combination length of 27m 2. Travel only permitted between 8am and 6pm 3. Travel not permitted between the hours of 8am and 9:30am and 2:30pm and 4pm school days
RT	402	Bedford Park Rd- Gilgandra Shire	National Park Rd	5.5km East of National Park Rd	1. Travel is not permitted during the following hours on school days 7:45am- 9:00am 3:30-4:45pm 2. There is no road train access from local roads to the Newell Highway north of Gilgandra

Type	Road No	Road Name	Starting point	Finishing point	Conditions
RT		Benanee Rd (Balranald Shire)	Sturt Highway (SH 14)	Euston Prungle Rd	Travel is permitted in dry weather only.
RT		Bencubbin Ave, Coleambally	Entire length		
RT	564	Berrigan- Jerilderie road (MR564)	Riverina Hwy (SH20) at Berrigan	Newell Hwy (SH17)	
RT	539	Binya St (MR539), Whitton	MR80 (Leeton Shire)	Brunell St	Travel not permitted during the following hours on school days: 7.00am to 9.30am 3.30pm to 5.00pm
RT		Blaxland St, Parkes	Hartigan Ave, Parkes	Shire Rd 47 (London RD)	1. Speed Restrictions 80km/h 2. Access prohibited 8:20am-8:50am and 3:40pm-4:10pm school days 3. During periods of wet weather, Parkes Shire Council to be consulted regarding possible road closures
RT	SR76	Bogan Road (Shire Road 76)	State Highway 17 (Newell Highway)	Shire Rd 82A (Taweni Rd)	1. Speed Restrictions 80km/h 2. Access prohibited 7:30am- 9am and 3pm- 4:30pm school days 3. Daylight hours only (B- Doubles Exempt) 4. During periods of wet weather, Parkes Shire Council to be consulted regarding possible road closures
RT		Bogan St, Peak Hill, Parkes Shire	Warrah ST, Peak Hill	Peak Hill Silo	1. Speed Restrictions 80km/h 2. Access prohibited

Type	Road No	Road Name	Starting point	Finishing point	Conditions
					7:30am- 9am and 3pm- 4:30pm school days 3. Daylight hours only (B-Doubles Exempt) 4. During periods of wet weather, Parkes Shire Council to be consulted regarding possible road closures
RT		Bolton St, Jerilderie	Newell Hwy (SH17)	North to the departure side of Billabong Creek Bridge	1 November to 30 May
RT		Boondilla Rd, Murrumbidgee Shire	Kidman Way	Entire length	1. Travel permitted only between 1 December and 30 April 2. Daylight Hours only
RT	SR122	Boor Hill Rd, Parkes Shire	Main Gate 350 (Bogans Gate to Tullamore Rd)	Shire Rd 217 (Tilmalldrie Lane)	1. Speed Restrictions 80km/h 2. Access prohibited 7:30am- 9am and 3pm- 4:30pm school days 3. Daylight hours only (B-Doubles Exempt) 4. During periods of wet weather, Parkes Shire Council to be consulted regarding possible road closures
RT		Booth st, Narromine	Minore St	Terangion St	
RT		Boothenba Rd, Dubbo	Yarrandale Rd, North Dubbo	Dubbo Abattiors and Saleyards.	
RT	017	Bourke St, Dubbo	Erskine St	Purvis Lane	
RT		Bourke St, Hay	Mid Western Hwy (SH6)	Murray St, Hay	
RT		Brewon Rd (Shire Roads 35 and 62)	Carinda–Quambone road (MR202), Carinda	Marthaguy Creek approx 34km north of Carinda	

Type	Road No	Road Name	Starting point	Finishing point	Conditions
RT		Bringagee Rd, Griffith	Entire length		
RT		Brogden Rd, Griffith	Bringagee Rd	Berecroy Rd	
RT	213	Brooks Rd- Gilgandra Shire	National Park Rd	Kirwee' gate	1. Travel is not permitted during the following hours on school days 7:45am-9:00am 3:30-4:45pm 2. There is no road train access from local roads to the Newell Highway north of Gilgandra
RT		Brown St, Jerilderie	Newell Hwy (SH17)	Nowranie St	
RT	SR1158	Bruie Plains Rd, Parkes Shire	Shire Rd 125 (Numulla Rd)	Main Rd 348 (Tullamore Rd)	1. Speed Restrictions 80km/h 2. Access prohibited 7:30am- 9am and 3pm-4:30pm school days 3. Daylight hours only (B-Doubles Exempt) 4. During periods of wet weather, Parkes Shire Council to be consulted regarding possible road closures
RT		Brunell St, Whitton	Binya St (MR539)	Entrance to the Whitton Grain Silos	Travel not permitted during the following hours on school days: 7.00am to 9.30am 3.30pm to 5.00pm
RT	16	Bruxner Hwy	Boggabilla	Wearne	

Type	Road No	Road Name	Starting point	Finishing point	Conditions
RT	207	Bulga Hillside Rd- Gilgandra Shire	Hillside Rd	Curban Biddon Rd- Gilgandra Shire	<ol style="list-style-type: none"> <li>1. Travel is not permitted during the following hours on school days 7:45am-9:00am 3:30-4:45pm</li> <li>2. There is no road train access from local roads to the Newell Highway north of Gilgandra</li> </ol>
RT	204	Bulga Rd, Gilgandra Shire	Curban Biddon Rd- Gilgandra Shire	Avondale Rd	<ol style="list-style-type: none"> <li>1. Travel is not permitted during the following hours on school days 7:45am-9:00am 3:30-4:45pm</li> <li>2. There is no road train access from local roads to the Newell Highway north of Gilgandra</li> </ol>
RT	SR 221	Bulgandramine Rd, Parkes Shire	Main Rd 348 (Peak Hill to Tullamore Rd)	Mingelo St, Peak Hill	<ol style="list-style-type: none"> <li>1. Speed Restrictions 80km/h</li> <li>2. Access prohibited 7:30am- 9am and 3pm-4:30pm school days</li> <li>3. Daylight hours only (B-Doubles Exempt)</li> <li>4. During periods of wet weather, Parkes Shire Council to be consulted regarding possible road closures</li> </ol>
RT		Bull Rd, Murumbidgee Shire	Kidman Way	Irrigation Bridge	<ol style="list-style-type: none"> <li>1. Travel permitted only between 1 December and 30 April</li> <li>2. Travel permitted daylight hours only</li> </ol>
RT	084	Burley Griffin Way	Whitton Stock Route Rd, Griffith	Grain Silos, Moomboodool	

Type	Road No	Road Name	Starting point	Finishing point	Conditions
RT		Burma Rd, Tocumwal	McCullochs Rd	Sportavia's Gate	
RT		Bushfield Rd, Berrigan Shire (Parish of Berrigan)	Edgecombe Rd	Sullivans Rd	Travel permitted from October to May only
RT		Cahills Rd, Carrathool Shire	Entire length		
RT		Cahills Rd, Carrathool Shire	Entire length		
RT	022	Calder Hwy (SH22), Curlwaa	Silver City Hwy (SH22)	NSW/ VIC border at Curlwaa	
RT		Calrose Ave, Coleambally	Full length		
RT		Carathool Road (Hay Shire)	Mid Western Hwy (SH6)	Hay/Carathool Shire boundary	
RT		Carrathool Rd	"Steam Plains" entrance south to MR 552 (approx 35 kms)	Deniliquin - Jerilderie Rd (MR552)	Seasonal approval – travel is permitted only during the months of November and December, and March-April- May.
RT		Casserley rd, Griffith	Brogden Rd	Northern boundary of DP 581627, Griffith	
RT	018	Castlereagh Hwy	Newell Hwy (SH17), Gilgandra	NSW/ Old border near Hebel	
RT		Cemetery Rd, Deniliquin	Rice Mill Rd	1500m south of Rice Mill Rd to "Denken" property	
RT		Centre Rd, Moama	Cobb Hwy (SH21)	Hillside Rd	
RT		Chapman Rd, Wentworth Shire	Sturt Hwy (Buronga)	Caltex/ Primary School Buronga	
RT	021	Cobb Hwy	Barrier Hwy (SH8) 19km east of Wilcannia	Nicholas Dr, Moama	

Type	Road No	Road Name	Starting point	Finishing point	Conditions
RT		Collins St, Hillston	Cowper St, Hillston	Hillston–Goolgowi road (MR80)	Dry weather only
RT		Colombo Rd, Jerilderie	Newell Hwy (SH17)	5km south of Newell Hwy (SH17)	Travel permitted from 1 November to 30 May only.
RT		Conargo Rd	Newell Hwy (SH17)	Jerilderie/ Conargo Shire boundary (19.3km west of Jerilderie)	
RT		Conargo Street, Mathoura	Mitchell Street	350m north of Clifton Street	
RT	57	Condoblin- Tottenham Rd, Parkes Shire	Lachlan Shire boundary (west of Tullamore)	Lachlan Shire boundary (north of Tullamore)	80Km/hr speed limit applies
RT	061	Condobolin– Cobar road	Condobolin– Tullamore road (MR57), Condobolin	Barrier Hwy (SH8), Cobar	
RT	070	Coolabah– Brewarrina road	Mitchell Hwy (SH7), Coolabah	Brewarrina–Bourke road (MR68), Brewarrina	
RT		Coolibah St, Moree	Greenbah Rd	Gwydir St	
RT		Coppard Rd, Griffith	Kidman Way (MR321)	500 metres west of Kidman Way	

Type	Road No	Road Name	Starting point	Finishing point	Conditions
RT	SR136	Coradgery Rd, Parkes Shire	Shire Rd 130 (Robertsons Rd)	Mingelo St, Peak Hill	<ol style="list-style-type: none"> <li>1. Speed Restrictions 80km/h</li> <li>2. Access prohibited 7:30am- 9am and 3pm- 4:30pm school days</li> <li>3. Daylight hours only (B- Doubles Exempt)</li> <li>4. During periods of wet weather, Parkes Shire Council to be consulted regarding possible road closures</li> </ol>
RT		Corbett Avenue, Buronga	Siver City Hwy (SH22)	Melaleuca Ave, Buronga	
RT		Cowper St, Hillston	Milton St, Hillston	Hillston–Goolgowi road (MR80)	
RT		Crawford Rd, Griffith	Kidman Way (MR321)	1.3km West of MR321	
RT	273	Creenaunes Lane, Gilgandra Shire	Bulga Rd	4.2km west of Bulga Rd	<ol style="list-style-type: none"> <li>1. Travel is not permitted during the following hours on school days 7:45am- 9:00am 3:30-4:45pm</li> <li>2. There is no road train access from local roads to the Newell Highway north of Gilgandra</li> </ol>
RT		Crocketts Rd, Jerilderie	Milthorpes Lane	3km west on Crocketts Rd	Travel permitted from 1 November to 30 May only.
RT		Cruikshank Rd, Berrigan Shire (Parish of Sargood)	Edgecombe Rd	Oakenfull Rd	Travel permitted Oct to May only
RT		Cruikshank Rd, Sargood (Berrigan Shire)	Edgecombe Rd	Oakenfull Rd	Travel permitted from October to May only

Type	Road No	Road Name	Starting point	Finishing point	Conditions
RT	7508	Culling St, Narromine	Manildra St	Dandaloo St (Mitchell Hwy, SH7)	The alternative route for heavy vehicles through Narromine must be used. Depot access only to Council approved sites.
RT	206	Curban Biddon Rd- Gilgandra Shire	Newell Hwy	East Coonamble Rd	1. Travel is not permitted during the following hours on school days 7:45am-9:00am 3:30-4:45pm 2. There is no road train access from local roads to the Newell Highway north of Gilgandra
RT	SR142	Curra Lane, Parkes Shire	Shire Rd 126 (Back Peak Hill Rd)	Main Rd 354 (Narromine Rd)	1. Speed Restrictions 80km/h 2. Access prohibited 7:30am- 9am and 3pm-4:30pm school days 3. Daylight hours only (B-Doubles Exempt) 4. During periods of wet weather, Parkes Shire Council to be consulted regarding possible road closures
RT		Dales Rd (Berrigan Shire)	Hamilton St	Finley Truckwash	
RT		Dalton Rd, Griffith	Entire Length		
RT		Darling St, Dubbo City Council	Mitchell Highway (Cobra St)	Macquarie St	

Type	Road No	Road Name	Starting point	Finishing point	Conditions
RT	SR84A	Day Lane, Parkes Shire	Shire Rd 88 (Hopetoun Lane)	Shire Rd 84 (Back Trundle Rd)	<ol style="list-style-type: none"> <li>1. Speed Restrictions 80km/h</li> <li>2. Access prohibited 7:30am- 9am and 3pm- 4:30pm school days</li> <li>3. Daylight hours only (B-Doubles Exempt)</li> <li>4. During periods of wet weather, Parkes Shire Council to be consulted regarding possible road closures</li> </ol>
RT		Deniliquin Rd (Berrigan Shire)	Newell Hwy (SH17)	Silo Rd	
RT	7605	Deniliquin- Barham Road	Ochertyre St, Deniliquin	Denililquin/ Murray Shire boundary	
RT	7605	Deniliquin- Barham Road	Ochertyre St, Deniliquin	Denililquin/ Murray Shire boundary	
RT	7605	Deniliquin- Barham Road (Murray Shire)	Deniliquin Council/ Murray Shire Council boundary	Moama-Barham Road (MR341)	
RT	552	Deniliquin- Jerilderie Rd	Conargo Shire boundary	Jerilderie Shire Council	Seasonal approval – travel is permitted only during the months of November and December, and March-April-May.
RT	552	Deniliquin- Jerilderie Road (Conargo Shire)	Conargo-Jerlдерie Shire boundary	2km west of the Conargo/Jerilderie Shire boundary	
RT	552	Deniliquin- Jerilderie road (Deniliquin Council)	Riverina Hwy (SH20)	Deniliquin/Conargo Shire boundary	
RT	296	Deniliquin- Moulamein road (Windouran	Cobb Hwy (SH21) at Pretty Pine	17.5km west of Cobb Hwy (SH21)	

Type	Road No	Road Name	Starting point	Finishing point	Conditions
		Shire Council)			
RT	296	Deniliquin-Moulmein Rd (MR296), Conargo Shire	Devon Rd	Barratta Creek Bridge	
RT	094	Deniliquin-Swan Hill road	Cobb Hwy (SH21)	Entrance to "Yaloke" (26 km west of Deniliquin)	
RT		Derribing Ave, Narromine	Alagalah St	Manildra St	Vehicles accessing Narromine saleyards only
RT		Derribing Ave, Narromine	Dandaloo St	Fifth Ave	
RT		Derribing Ave, Narromine	Fifth Ave	McNamaras Lane, Narromine	
RT	SR46	Doreen Lane	Kamilaroi Hwy (SH29)	Spring Plains Rd (SR4)	
RT		Duryea St	Sturt Highway SH14	To end of Menon St (Closed)	
RT	201	East Coonamble Rd, Gilgandra Shire	Newell Hwy	Nalders Rd	1. Travel is not permitted during the following hours on school days 7:45am-9:00am 3:30-4:45pm 2. There is no road train access from local roads to the Newell Highway north of Gilgandra
RT		Echuca St, Moama	Nicholas St	Martin St	
RT		Edward St, Moree	Heber St	Gwydir St	
RT		Ercildoune Rd, Coleambally	Kidman Way (MR321)	150 metres west of the Kidman Way (MR321), (Walsh rice shed entrance)	

Type	Road No	Road Name	Starting point	Finishing point	Conditions
RT		Ercildoune Rd, Murrumbidgee Shire	Kidman Way	Martin Bell Rd	1. Travel permitted only between 1 December and 30 April. 2 Daylight hours only except between 8am and 9am and 3pm and 4pm on school days
RT		Erskine St, Dubbo	Whylandra St	Fitzroy St, Cobbara Rd (SH27) Roundabout, Dubbo	
RT		Euabalong Rd, Hillston	Kidman Way (MR321)	Carrathool/ Lachlan Shire boundary	
RT		Euabalong Rd, Hillston	Hillston-cobar Rd (MR410)	Carrathool/ Lachlan Shire boundary	
RT		Eubalong Rd, Hillston	Hillston-Cobar Rd (MR410)	Carrathool/ Cobar Shire boundary	
RT		Euston Prungle Rd. (Balranald Shire)	Sturt Highway (SH 14)	Prungle Mail Rd.	Travel is permitted in dry weather only.
RT		FCL Access Rd, Parkes	Hartigan Ave, Parkes	FCL Depot	
RT		Federation St, Gilgandra	Castlereagh Hwy (SH18)	Oxley Hwy (SH11)	
RT		Fitzroy St, Dubbo	River St	Purvis Lane, North Dubbo	
RT		Fitzroy St, Narrabri	Barwan St, Narrabri	Maitland St	1. Max combination length of 27m 2. Travel only permitted between 8am and 6pm 3. Travel not permitted between the hours of 8am and 9:30am and 2:30pm and 4pm school days
RT	SR1249	Five Chain Lane, Parkes Shire	Shire Rd 83 (Middle Trundle Rd)	Shire Rd 104 (Adavale Lane)	1. Speed Restrictions 80km/h 2. Access prohibited 7:30am- 9am and 3pm-

Type	Road No	Road Name	Starting point	Finishing point	Conditions
					4:30pm school days 3. Daylight hours only (B-Doubles Exempt) 4. During periods of wet weather, Parkes Shire Council to be consulted regarding possible road closures
RT		Fletchers Lake Rd, Dareton	Silver City Hwy (SH22)	South-eastern boundary of the unrestricted road train area of Western NSW	
RT	350	Forbes-Tullamore Rd, Parkes Shire	Forbes Shire boundary	Bogan Gate-Parkes Rd (MR61)	80Km/hr speed limit applies
RT	350	Forbes-Tullamore Rd, Parkes Shire	Bogan Gate-Condoblin Rd (MR61)	Peak Hill-Tullamore Rd (MR348)	80Km/hr speed limit applies
RT	367	Garah-Mungindi road	Moree-Boomi road (MR232), Garah	NSW/Qld border at Mungindi	
RT	SR168	Gobondery Rd, Parkes Shire	Main Gate 350 (Bogan Gate to Tullamore Rd)	Gobondery Silo	1. Speed Restrictions 80km/h 2. Access prohibited 7:30am- 9am and 3pm- 4:30pm school days 3. Daylight hours only (B-Doubles Exempt) 4. During periods of wet weather, Parkes Shire Council to be consulted regarding possible road closures
RT		Goobar St, Narrabri	Shire Road 29	Baranbar St	
RT	507	Goondiwindi-Mungindi road	Newell Hwy (SH17) near Goondiwindi Bridge over Macintyre River	Garah-Mungindi road (MR367), Mungindi	
RT		Greens Lane, Jerilderie	Newell Hwy (SH17)	1km east of Newell hwy (SH17)	

Type	Road No	Road Name	Starting point	Finishing point	Conditions
RT		Greggerys Road, Berrigan	Berrigan-Jerilderie road (MR564)	Unnamed lane [access to Barrett's Tyre Service]	
RT	080	Griffin Ave, Griffith	Kookora St	Griffith Saleyards Entrance	
RT		Gunyah Rd, Wentworth Shire	Silver City Highway (Coomealla)	Southern boundary of Reserve Rd East	
RT	012	Gwydir Hwy	Biniguy (east of Moree) at SR 183	Castlereagh Hwy (SH18) north of Walgett	
RT		Gwydir St, Moree	Coolibah Rd	Balo Rd	
RT		Haines St, Hillston	O'Donald St	Aerodrome Rd	Travel permitted in dry weather only
RT		Hamilton St (Berrigan shire)	Riverina Hwy (SH20)	Dales Rd	
RT		Hargraves Lane, Gilgandra	Oxley Hwy (SH11)	Newell Hwy (SH17)	
RT		Harris Rd, Griffith	Bridge Rd	Oakes Rd	
RT		Hartigan Ave, Parkes	Brolgan Rd	Blaxland St, Parkes	
RT		Hartwood Rd, Mayrung	"Normanswood", 12km south of MR552	Deniliquin-Jerilderie Rd (MR552)	Seasonal approval – travel is permitted only during the months of November and December, and March-April-May.

Type	Road No	Road Name	Starting point	Finishing point	Conditions
RT		Harvey's Well Rd, Murrumbidgee Shire	Ercildoune Rd	Ryan Rd	1. Travel permitted only between 1 December and 30 April 2. Travel permitted daylight hours only except from 8am to 9am and 3pm to 4pm on school days
RT		Hately's Lane, West Wyalong	West Wyalong- Ungarie Rd (MR57)	AWB Access Road	
RT	211	Hillside Hall Rd, Gilgandra Shire	National Park Rd	Hillside Rd	1. Travel is not permitted during the following hours on school days 7:45am-9:00am 3:30-4:45pm 2. There is no road train access from local roads to the Newell Highway north of Gilgandra
RT	209	Hillside Rd, Gilgandra Shire	National Park Rd	Bulga Hillside Rd	1. Travel is not permitted during the following hours on school days 7:45am-9:00am 3:30-4:45pm 2. There is no road train access from local roads to the Newell Highway north of Gilgandra
RT		Hillside Rd, Moama	Centre Rd	Solvent Recovery Plant	
RT		Hollands Lake Rd, Wentworth Shire	Silver City Highway (Coomealla)	Reserve Rd East, Citrus Drive Boundary	

Type	Road No	Road Name	Starting point	Finishing point	Conditions
RT	SR88	Hopetoun Lane, Parkes Shire	Shire Rd 79A (Wyatts Lane)	Shire Rd 90 (McClintocks Lane)	<ol style="list-style-type: none"> <li>1. Speed Restrictions 80km/h</li> <li>2. Access prohibited 7:30am- 9am and 3pm- 4:30pm school days</li> <li>3. Daylight hours only (B-Doubles Exempt)</li> <li>4. During periods of wet weather, Parkes Shire Council to be consulted regarding possible road closures</li> </ol>
RT		Hursley St, Hay	Cadell St	Old Thellangerin Rd	
RT		Ilkadoon Rd, Carrathool Shire	Entire length		
RT		Ilkadoon Rd, Carrathool Shire	Entire length		
RT		Jack McWilliam, Hanwood	Kidman Way (MR321)	Entrance to Bartter Enterprises	
RT		Jackson St, Hay	Soapworks Rd	Eastern boundary of number 6 Jackson St	
RT	552	Jerilderie-Deniliquin Rd	Newell Hwy (SH17)	Jerilderie/ Conargo Shire boundary (19.3km west of Jerilderie)	
RT		Jim Cattanach Rd, Murrumbidgee Shire	Kidmans Way	Entire length	<ol style="list-style-type: none"> <li>1. Travel permitted only between 1 December and 30 April</li> <li>2. Daylight Hours only</li> </ol>
RT		Jimmy Cull Rd, Coleambally	Kidman Way (MR321)	200 metres south of Bencubbin Avenue	
RT		Jindalee Rd, Wentworth Shire	River Rd (Coomealla)	Full length	

Type	Road No	Road Name	Starting point	Finishing point	Conditions
RT		Johnson St, Dubbo	Fitzroy St	Entire length	Access permitted only to council approved developments.
RT	29	Kamilaroi Hwy	Newell Hwy (SH11) at Narrabri	Mitchell Hwy (SH7) at Bourke	
RT		Kennedy St, Jerilderie	Newell Hwy (SH17)	Mahonga St	
RT		Kennedy St, Jerilderie	Nowranie St	Saleyards Rd	
RT	MR7521	Kiacatoo Rd, Lachlan Shire	MR61	SR58	
RT	321	Kidman Way	Newell Hwy (SH17), Jerilderie	Willandra Ave, Griffith	
RT		Kookora St, Griffith	Willandra Avenue	Griffin Ave (MR80)	
RT		Kyalite Rd (Balranald Shire)	Main Road 67	Pearsons Rd (Old Balranald Rd)	
RT		Lachlan River Rd, Hillston	Griffith-Mosgiel road (MR80)	Kidman Way near Willandra	
RT		Lachlan Valley Way	Euabalong–Mount Hope road (MR411) Euabalong	Condobolin–West Wyalong road (MR57) near Condobolin	
RT	377	Lachlan Valley Way	Newell Hwy (SH17), Forbes	Condobolin– Melrose road (MR61), Condobolin	
RT	501	Lachlan Valley Way	Willanthry Bridge– The Priory road (MR410) at Willanthry Bridge	Cobb Hwy (SH21), Booligal	
RT	501	Lachlan Valley Way, Carrathool Shire	Willanthry Bridge	Carrathool/ Lachlan Shire boundary	
RT		Lakers Rd, Blighty	Riverina Hwy (SH20)	Moonee Swamp Rd	
RT	SR197	Leafy Tank Rd, Parkes Shire	Parkes-Condobolin Rd (MR61)	Nardoo Lane (SR75)	80Km/hr speed limit applies

Type	Road No	Road Name	Starting point	Finishing point	Conditions
RT		Leahy's Lane, Jerilderie	Newell Hwy (SH17)	1km west of Newell Hwy (SH17)	Travel permitted from 1 November to 30 May only.
RT		Lindsay St, Hay	Cadell St	Old Thellangerin Rd	
RT		Link Rd (Mourquong)	North of Silver City Hwy	Northern most dead end of road reserve	
RT		Livingstone Street, Mathoura	Mitchell Street	Edward Street	
RT		Logie Bray Rd, Mayrung	Callaghans Rd	Palazzis Rd	
RT	SR47	London Rd, Parkes	Blaxland St, Parkes	Westlime Depot	1. Speed Restrictions 80km/h 2. Access prohibited 8:20am-8:50am and 3:40pm-4:10pm school days 3. During periods of wet weather, Parkes Shire Council to be consulted regarding possible road closures
RT		Lower Tocumwal Rd, Blighty	Conargo/ Berrigan Shire boundary	Savages Rd	
RT		Macleay Rd, Murrumbidgee Shire	Ercildoune Rd	Entire length	1. Travel permitted only between 1 December and 30 April. 2 Daylight hours only except between 8am and 9am and 3pm and 4pm on school days
RT		Macquarie St, Dubbo City Council	Darling St, Dubbo City Council	Old Dubbo Rd at its intersection with Margaret St	

Type	Road No	Road Name	Starting point	Finishing point	Conditions
RT		Mahonga St, Jerilderie	O'Neill St	Sargood St	
RT		Mahonga St, Jerilderie	Kennedy St	Brown St	
RT		Maitland St, Condoblin	Condoblin-Melrose road (MR61)	Shire Road No 45	
RT		Maitland St, Narrabri	Fitzroy St, Narrabri	Old Gunnedah Rd	<ol style="list-style-type: none"> <li>1. Max combination length of 27m</li> <li>2. Travel only permitted between 8am and 6pm</li> <li>3. Travel not permitted between the hours of 8am and 9:30am and 2:30pm and 4pm school days</li> </ol>
RT	7508	Manildra St, Narromine	Burraway St (Mitchell Hwy, SH7)	Culling St	<ol style="list-style-type: none"> <li>1. The alternative route for heavy vehicles through Narromine must be used.</li> <li>2. Depot access only to Council approved sites</li> </ol>
RT		Manildra St, Narromine	Terangion St	Narromine saleyards	<ol style="list-style-type: none"> <li>1. Vehicles accessing Narromine saleyards only.</li> <li>2. No access across railway level crossing to Burraway St (Mitchell Hwy, SH7)</li> </ol>
RT		Marshes Rd (Berrigan Shire)	Jerilderie Rd (MR564)	Namarang Pty Ltd property	
RT	319	Maude-Moulamein road (Hay Shire)	Hay-Oxley road (MR514)	Hay/ Windouran Shire boundary	

Type	Road No	Road Name	Starting point	Finishing point	Conditions
RT		McCabe St bypass, Balranald	Church St	Ivanhoe Rd	
RT		McCabe St, Balranald	Sturt Hwy (SH14)	Church St	
RT	SR90	McClintocks Lane, Parkes Shire	Shire Rd 88 (Hopetoun Lane)	Shire Rd 76 (Bogan Lane)	<ol style="list-style-type: none"> <li>1. Speed Restrictions 80km/h</li> <li>2. Access prohibited 7:30am- 9am and 3pm- 4:30pm school days</li> <li>3. Daylight hours only (B-Doubles Exempt)</li> <li>4. During periods of wet weather, Parkes Shire Council to be consulted regarding possible road closures</li> </ol>
RT		McCullochs Rd, Tocumwal	Racecourse Rd	Burma Rd	
RT		McNamaras Lane, Narromine	Dandaloo St	Mitchell Hwy	
RT		Meilman Rd (Balranald Shire)	Sturt Highway (SH14)	Meilman Station Entrance.	Travel is permitted in dry weather only.
RT		Melaleuca St , Wentworth Shire	Sturt Hwy (Buronga)	Southern boundary of Pitman Ave	
RT		Melbergen Rd, Carrathool Shire	Hillston-Rankin Springs Rd (MR368)	Back Hillston Rd	
RT		Melbergen Rd, Carrathool Shire	MR368	Back Hillston Rd	
RT		Melrose Rd, Headford (Berrigan Shire)	Woolshed Rd	Berrigan Rd	Travel permitted from October to May only

Type	Road No	Road Name	Starting point	Finishing point	Conditions
RT	347	Melrose–Collie road	Condobolin–Nymagee road (MR61), Melrose	Oxley Hwy (SH11), Collie	
RT		Merrilea Lane, Dubbo	Yarrandale Rd, Dubbo	0.6 kms east of Yarrandale Rd at the Dubbo Turf Club access and return	
RT		Merungle Rd, Carrathool Shire	Hillston-Mossgiel Rd (MR80)	11.6kms west to 'Brooklyn' entrance	
RT		Merungle Rd, Carrathool Shire	MR80	11.6km west of Brooklyn entrance	Travel permitted until 28/02/02
RT	006	Mid Western Hwy	Newell Hwy (SH17), West Wyalong	Cobb Hwy (SH21), Hay	
RT	SR83	Middle Trundle Rd, Parkes Shire	Main Road 61 (Condobolin Rd)	Shire Rd 1249 (Five Chain Lane)	<ol style="list-style-type: none"> <li>1. Speed Restrictions 80km/h</li> <li>2. Access prohibited 7:30am- 9am and 3pm- 4:30pm school days</li> <li>3. Daylight hours only (B-Doubles Exempt)</li> <li>4. During periods of wet weather, Parkes Shire Council to be consulted regarding possible road closures</li> </ol>
RT		Mills Rd, Sargood (Berrigan Shire)	Newell Hwy (SH17)	Cruikshank Rd	Travel permitted from October to May only
RT		Milthorpe Lane, Jerilderie	Wilson Rd	Crocketts Rd	Travel permitted from 1 November to 30 May only
RT		Milton St, Hillston	Lachlan River Rd	Cowper St	

Type	Road No	Road Name	Starting point	Finishing point	Conditions
RT		Mingelo St, Peak Hill	Shire Rd 136 (Coradgery Rd)	Warrah St, Peak Hill	<ol style="list-style-type: none"> <li>1. Speed Restrictions 80km/h</li> <li>2. Access prohibited 7:30am- 9am and 3pm- 4:30pm school days</li> <li>3. Daylight hours only (B- Doubles Exempt)</li> <li>4. During periods of wet weather, Parkes Shire Council to be consulted regarding possible road closures</li> </ol>
RT		Minore St, Narromine	Algalah St (Narromine – Tomingley Rd)	Murgah St	Vehicles accessing Narromine saleyards only.
RT		Minore St, Narromine	Murgah St	A'Beckett St	
RT	007	Mitchell Hwy	NSW/ Qld border at Barrington	Thompson St, Dubbo	<ol style="list-style-type: none"> <li>1. The alternative route for heavy vehicles through Narromine must be used.</li> <li>2. Depot access only to Council approved sites</li> </ol>
RT	7	Mitchell Hwy, Narromine	Manildra St	Dandaloo St, Narromine	
RT		Mitchell Street, Mathoura	Cobb Highway (SH21)	Conargo Street	
RT		Mitchells Rd, Hillston	Hillston-Lake Cargelligo Rd (MR501)	4.5kms south east of MR501	
RT		Mitchells Rd, Hillston	Lachlan Valley way (MR501)	4.5km south east of the Lachlan Valley Way (MR501) ("Burilda " property)	Travel permitted until 28/02/02
RT		Moa St, Balranald	Sturt Hwy (SH14)	Main Road 67	

Type	Road No	Road Name	Starting point	Finishing point	Conditions
RT	341	Moama-Barham Road	Deniliquin-Barham Road (MR7605)	Murray Shire Council/ Wakool Shire Council boundary	
RT	375	Mooloobar St, Narrabri	Newell Hwy (SH17), Narrabri	Baranbar St	Access to Oil Seed Mill
RT		Moonbria Rd	"Euroka" 12km west to Carrathool Rd	Carrathool Rd	Seasonal approval – travel is permitted only during the months of November and December, and March-April-May.
RT		Moonee Swamp Rd, Deniliquin	Hoads Rd	Lakers Rd	
RT		Moonee Swamp Rd, Deniliquin Council	Todds Lane	Deniliquin Council/ Conargo Shire boundary	
RT		Moonee Swamp Road, Deniliquin Council	Conargo Road	Hoads Rd	
RT		Moonee Swamp Road, Deniliquin Council	Conargo Road	Todds Lane	
RT	080	Mossiel–Griffith road	Cobb Hwy (SH21), Mossgiel	Kookora St, Griffith	
RT	411	Mount Hope–Euabalong road	Willanthry Bridge–The Priory road (MR410) near Mount Hope	Lachlan Valley Way (MR230) 5.6 km east of Euabalong	
RT		Munro's Rd, Carrathool Shire	Mid Western Hwy		
RT		Murgah St, Narromine	Minore St	Terangion St	Vehicles accessing Narromine saleyards only.
RT		Murrami Rd South, Murrami	MR80 (Leeton Shire)	Whitton Road	Travel not permitted during the following hours on school days:

Type	Road No	Road Name	Starting point	Finishing point	Conditions
					7.00am to 9.30am 3.30pm to 5.00pm
RT		Murrami Road North, Murrami	MR80 (Leeton Shire)	Entrance to Murrami Grain Storgae Silos (off Sheppards Rd)	Travel not permitted during the following hours on school days: 7.00am to 9.30am 3.30pm to 5.00pm
RT		Murrumbidgee River Rd, Hillston	Carrathool/Griffith Shire boundary	3.5km west of the Carrathool/ Griffith Shire boundary ("Dunualeigh" property)	
RT		Myall St, Dubbo	Bourke St (Newell Hwy)	Western Driveway of Frank Coss Tyres Development (0.11kms west from the Newell Hwy)	
RT	259	Nalder Access Rd, Gilgandra Shire	National Park Rd	Judes Park' gate	1. Travel is not permitted during the following hours on school days 7:45am-9:00am 3:30-4:45pm 2. There is no road train access from local roads to the Newell Highway north of Gilgandra
RT	258	Nalders Rd- Gilgandra Shire	East Coonamble Rd	Studholme' Gate	1. Travel is not permitted during the following hours on school days 7:45am-9:00am 3:30-4:45pm 2. There is no road train access from local roads to the Newell Highway north of Gilgandra
RT		Namoi St, Narrabri	Newell Hwy (SH17)	Narrabri Saleyards	

Type	Road No	Road Name	Starting point	Finishing point	Conditions
RT		Narrabri-Collins Bridge Rd	Newell Hwy (SH17), Narrabri Junction	Junction with Shire Rd 232 at Collins Bridge	No road train access on Main Road 127 via Wee Waa township between Collins Bridge and junction with Shire Road 247 west of Wee Waa
RT	80	Narrandera-Griffith road	Murrami Rd, Leeton	Whitton Stock Route Rd, Griffith	
RT	89	Narromine–Tomingley road	Mitchell Hwy (SH7), Narromine	Newell Hwy (SH17), Tomingley	
RT	212	National Park Rd- Gilgandra Shire,	East Coonamble Rd	Box Ridge Rd	1. Travel is not permitted during the following hours on school days 7:45am-9:00am 3:30-4:45pm 2. There is no road train access from local roads to the Newell Highway north of Gilgandra
RT	17	Newell Highway	Golden Hwy (SH17), Dubbo	Hargraves Lane, Gilgandra	No access between 7:30am and 9am and 3:30pm and 5pm on school days
RT	17	Newell Highway, Tomingley	Narromine-Tomingley (MR89), Tomingley	Rest Area 1km south, opposite Shell Roadhouse, Tomingley	
RT	017	Newell Hwy	Jolly's Lane, Narrandera	Tocumwal-Malthoura road, Tocumwal	
RT	017	Newell Hwy	NSW/Qld border at Goondiwindi	1 km North of junction with Oxley Highway (SH11) near Coonabarabran.	Terminal is at the rest area provided.

Type	Road No	Road Name	Starting point	Finishing point	Conditions
RT	017	Newell Hwy	Lachlan Valley Way (MR377)	Forbes saleyards and abattoirs	Heavy vehicle bypass through Forbes must be used (Sheriff St, Dowling St and Parkes Rd)
RT	017	Newell Hwy	Riverina Hwy at Finley	Finley Rice Mills	
RT	17	Newell Hwy (Bourke St), Dubbo	River St	Purvis Lane	
RT	017	Newell Hwy, Gilgandra	Ampol Truck Stop	Hargraves Lane	Accesses Ampol, Finemores Depot and Graincorp's Silos
RT		Next to Simeon Wines Mourquong (unnamed)	Silver City Hiwy	Full length	Winery Access
RT		Nicholas Dr, Moama	Deniliquin-Moama road (SH21)	Echuca St	
RT		North Coree Rd, Jerilderie	Jerilderie Shire/Conargo Shire boundary	Wilson Rd	Travel permitted from 1 November to 30 May only
RT		North Kooba Settlers Rd, Griffith	Kidman Way (MR321)	Murdoch Rd	
RT		North Minore Road, west of Dubbo	Mitchell Hwy (SH7)	Minore Silos	
RT		Northparkes Lane, Parkes Shire	Bogan Rd (Shire Rd 76)	Northparkes Mine Site	Speed restriction 80km/h
RT		Nowranie St, Jerilderie	Newell Hwy (SH17)	50m past O'Neill St	
RT	SR125	Numulla Rd, Parkes Shire	Main Gate 350 (Bogans Gate to Tullamore Rd)	Shire Rd 1158 (Bruie Plains Rd)	<ol style="list-style-type: none"> <li>1. Speed Restrictions 80km/h</li> <li>2. Access prohibited 7:30am- 9am and 3pm- 4:30pm school days</li> <li>3. Daylight hours only (B-Doubles Exempt)</li> <li>4. During periods of wet</li> </ol>

Type	Road No	Road Name	Starting point	Finishing point	Conditions
					weather, Parkes Shire Council to be consulted regarding possible road closures
RT	SR125	Numulla Rd, Parkes Shire	Shire Rd 122 (Boorr Hill Rd)	Main Road 354 (Narromine Rd)	<ol style="list-style-type: none"> <li>1. Speed Restrictions 80km/h</li> <li>2. Access prohibited 7:30am- 9am and 3pm- 4:30pm school days</li> <li>3. Daylight hours only (B-Doubles Exempt)</li> <li>4. During periods of wet weather, Parkes Shire Council to be consulted regarding possible road closures</li> </ol>
RT	228	Nymagee– Hermidale road	Melrose–Nymagee road (MR61), Nymagee	Barrier Hwy (SH8), Hermidale	
RT	057	Nyngan–Albert road	Mitchell Hwy (SH7), Nyngan	Trangie–Melrose road (MR347), Albert	
RT	204	Nyngan–Mundadoo road	Mitchell Hwy (SH7), Nyngan	Coolabah–Quambone road (MR424) near Bridge over Marra Creek at Mundadoo	
RT		O'Donnell St, Hillston	Aerodrome Rd	Haines St	
RT		O'Neill St, Jerilderie	Newell Hwy (SH17)	Mahonga St	
RT		Oakenfull Rd, Berrigan Shire (Parish of Berrigan)	Boundary Rd	Jerilderie Rd (MR564)	Travel permitted from October to May only
RT		Old Dubbo Rd, Dubbo city Council	Macquarie St, Dubbo City Council	"Mirambee" Feedlot- a distance of 12 kms south of the intersection of Macquarie and Margaret Sts	
RT		Old Euston Rd, (Paringi) Wentworth	Sturt Highway	Wickets turn off	

Type	Road No	Road Name	Starting point	Finishing point	Conditions
		Shire			
RT	SR10	Old Gunnedah Rd	Maitland St	Johnstone Ready Mixed Concrete	1. Max combination length of 27m 2. Travel only permitted between 8am and 6pm 3. Travel not permitted between the hours of 8am and 9:30am and 2:30pm and 4pm school days
RT		Old Thellangerin Rd, Hay	Lindsay St	Showground Rd/ Dunera Way	
RT		Old Thellangerin Rd, Hay	Dunera Way	1.5km north of intersection with Dunera Way	
RT	9036	Old Turrawan Rd (Shire Road 36), Narrabri	Newell Hwy (SH17), Narrabri West	Gordon Roadways Depot (approx 1.9km)	
RT	SR36	Old Turrawan Rd (Shire Road 36), Narrabri	Newell Highway (SR17) Narrabri West	Gordon Roadways Depot, Narrabri	Travel not permitted between the hours of 8am and 9:30am and 2:30pm and 4pm school days
RT	011	Oxley Hwy	Newell Hwy (SH17), Gilgandra	Mitchell Hwy (SH7), Nevertire	
RT	SR1	Oxley Rd	Warren-Carinda Rd (MR333), approximately 80km north of Warren	Entire length	
RT		Oxley-Clare Rd, Balranald Shire	Oxley Rd (MR514)	Nandum-Corrong Rd	
RT		Parfrey's Rd, Deniliquin	"Burwan", 200 metres south of Riverina Hwy	Riverina Hwy	

Type	Road No	Road Name	Starting point	Finishing point	Conditions
RT	61	Parkes- Bogan Gate RD	Bogan Gate- Tullamore Rd (MR 350), Bogan Gate	Westlime Rd, Parkes	
RT	61	Parkes- Condobolin road	Bogan Gate- Tullamore Road (MR350), Bogan Gate	Condobolin- Tullamore Road (MR57), Condobolin	
RT	348	Peak Hill- Tullamore Rd, Parkes Shire	Newell Hwy (SH17)	Condobolin- Tullamore Rd (MR57)	Access to MR348 not permitted to the Newell Hwy (SH17).
RT		Pearsons Rd (Old Balranald Rd in Balranald Shire)	Kyalite Rd (Balranald Shire)	Pearsons entrance, 600m from Kyalite Rd	
RT	514	Penarie–Hay road	Balranald–Ivanhoe road (MR67), Penarie	Cobb Hwy (SH21), Hay	
RT		Petro Mail Rd, Wentworth Shire	Wamberra Rd	Arumpo Rd, Full length	
RT	7716	Pilliga–Walgett road via Goangra	Burren Junction– Baradine road (MR329), Pilliga	Castlereagh Hwy (SH18) approx 1 km south of Walgett	
RT		Pine Dr, Coleambally	Kidman Way (MR321)	Bencubbin Avenue	
RT		Pine Lodge Rd (Berrigan Shire)	Newell Hwy (SH17)	Conargo Shire boundary	
RT		Poorley St, Wentworth Shire	Sturt Hwy (Buronga)	Southern boundary of lane way	

Type	Road No	Road Name	Starting point	Finishing point	Conditions
RT	SR166	Porters lane, Parkes Shire	Shire Rd 126 (Back Peak Hill Rd)	Shire Rd 126 (Back Peak Hill Rd)	<ol style="list-style-type: none"> <li>1. Speed Restrictions 80km/h</li> <li>2. Access prohibited 7:30am- 9am and 3pm- 4:30pm school days</li> <li>3. Daylight hours only (B-Doubles Exempt)</li> <li>4. During periods of wet weather, Parkes Shire Council to be consulted regarding possible road closures</li> </ol>
RT		Prungle Mail Rd (Balranald Shire)	Sturt Highway (SH 14)	Euston Prungle Rd & Prungle Marma Rd	Travel is permitted in dry weather only.
RT		Purvis Lane, Dubbo City Council	Newell Hwy	280 metres to the eastern side of the railway crossing	<ol style="list-style-type: none"> <li>1. Travel is not permitted in the period between half an hour before sunset and half an hour after sunrise.</li> <li>2. Travel is not permitted from 7.30 to 9.00am and from 3.30 to 5pm on school days.</li> </ol>
RT		Purvis Lane, Dubbo City Council	Newell Hwy	Yarrandale Rd,	
RT		Pyles Rd, Berrigan	Sullivans Rd	Jerilderie St (MR564)	Travel permitted from October to May only
RT		Racecourse Rd, Tocumwal	Newell Hwy (SH17)	McCullochs Rd	
RT		Railway St, Gilgandra	Oxley Hwy (SH11)	Womboin St	
RT	368	Rankin Springs– Hillston road	Mid Western Hwy (SH6), Rankin Springs	Hillston–Griffith road (MR80), Hillston	

Type	Road No	Road Name	Starting point	Finishing point	Conditions
RT		Ricemill Rd, Deniliquin	Saleyards Rd	Wirraway Dr	
RT		Ricemill Rd, Berrigan Shire	Newell Highway (SR17)	500m west of the Newell Highway (SH17) at the western property entrance of the Rice Marketing Board NSW grain Depot	
RT		Richard Ryan Place, Dubbo.	Purvis Lane	To its conclusion and return.	
RT		River Rd, Wentworth Shire	Silver City Highway (Buronga)	Northern boundary of Jindalee Rd intersection	
RT		River St, Dubbo	Bourke St	Fitzroy St, North Dubbo	
RT	20	Riverina Hwy	Deniliquin	McNaught's Depot at Berrigan	
RT		Riverina Hwy (Berrigan Shire)	Jerilderie Rd (MR564)	Woodstock Rd	
RT	SR130	Robertsons Rd, Parkes Shire	Shire Rd 82A (Taweni Rd)	Shire Rd 136 (Coradgery Rd)	<ol style="list-style-type: none"> <li>1. Speed Restrictions 80km/h</li> <li>2. Access prohibited 7:30am- 9am and 3pm- 4:30pm school days</li> <li>3. Daylight hours only (B- Doubles Exempt)</li> <li>4. During periods of wet weather, Parkes Shire Council to be consulted regarding possible road closures</li> </ol>
RT		Rockcliffs Rd, Berrigan Shire (Parish of Osborne)	Shands Rd	Oaklands Rd	Travel permitted Oct to May only

Type	Road No	Road Name	Starting point	Finishing point	Conditions
RT		Rose St, Wentworth Shire	Sturt Hwy (Buronga)	60m north of Sturt Highway	
RT		Roto Rd, Hillston	MR80, Hillston	Entire length	
RT		Ryan Rd, Murrumbidgee Shire	Harveys Well Rd	Entire length – to end of road both north and south from Harveys Well Rd	1. Travel permitted only between 1 December and 30 April 2. Travel permitted daylight hours only except from 8am to 9am and 3pm to 4pm on school days
RT		Saleyards Lane, Narrabri	Intersection SH17 (Newell Highway and Saleyards Lane)	Intersection of Namoi St and Saleyards Lane	Max speed limit 50km/h
RT		Saleyards Rd, Deniliquin	Abattoir Rd	Ricemill Rd	
RT		Saleyards Rd, Deniliquin	Wirraway Dr	CobbHwy (SH21)	
RT		Saleyards Rd, Jerilderie	Newell Hwy (SH17)	Kennedy St	
RT		Sargood St, Jerilderie	Newell Hwy (SH17)	Mahonga St	
RT	1 9	Sargood St, Jerilderie Shire	Mahonga St	50m south of Mahonga St	
RT		Shaw Rd, Griffith	Entire length		
RT	SR45	Shire road 45, Lachlan Shire	Maitland St, Condoblin	“Needlewood Hill” property	
RT		Showground Rd/Dunera Way, Hay	Cobb Hwy (SH21)	Old Thellangerin Rd	
RT		Silo Rd (Berrigan Shire)	Newell Hwy (SH17)	Deniliquin Rd	

Type	Road No	Road Name	Starting point	Finishing point	Conditions
RT	022	Silver City Hwy	Sturt Hwy (SH14), Buronga	NSW/ Old border at Warri Gate	Road over Abbotsford Bridge must not be used. Routes through Broken Hill as per note 1 of Road Train Area must be used
RT		Sloane St, Denilquin	Hardinge St	Macauley St	
RT		Smith Rd, Carrathool Shire	MR501- Lachlan Valley Way	MR80 Kidman Way	
RT		Soapworks Rd, Hay	Hay-Oxley Rd (MR514)	Jackson St	
RT		South Coree Rd (Berrigan Shire)	Riverina Hwy (SH20)	Jerilderie Shire boundary	
RT	25	South Coree Rd, Jerilderie Shire	Conargo Rd (RR552)	1.0km south of RR552	
RT		Steele Rd, Murrumbidgee Shire	Bull Rd	Entire length	1. Travel permitted only between 1 December and 30 April 2. Daylight Hours only
RT		Stewart St, Deniliquin	Ochertyre St	Sloane St	
RT	424	Stoney Hills–Mundadoo road	Coolabah–Brewarrina road (MR70), Stoney Hills	Nyngan–Mundadoo road at bridge over Marra Creek at Mundadoo	
RT	014	Sturt Highway	Cobb Hwy (SH21), Hay	“Gundaline” property (approximately 15km east of the Carrathool turnoff)	
RT	014	Sturt Hwy	Eastern junction of Kidman Way (MR321) and Sturt Hwy (SH14)	Western junction of Kidman Way (MR321) and Sturt Hwy (SH14)	

Type	Road No	Road Name	Starting point	Finishing point	Conditions
RT	014	Sturt Hwy	Silver City Hwy (SH22) at Wentworth	Cobb Hwy (SH21), Hay	
RT	014	Sturt Hwy	Silver City Hwy (SH22), Buronga	NSW/ VIC border, Mildura	
RT	014	Sturt Hwy	Kidman Way (MR321)	Gundaline	
RT		Sullivans Rd, Berrigan	Bushfield Rd	Pyles Rd	Travel permitted from October to May only
RT	067	Swan Hill-Ivanhoe Rd	Wakool River-Balranald & Wakool Shire Boundary	Balranald & Central Darling Shire Boundary	
RT		Swan Hill-Ivanhoe Rd (Wakool Shire Council)	Murray River bridge at Swan Hill	Wakool River Bridge at Kyalite	No operation during school bus hours between 8.00-9.00am and 3.30-4.30pm
RT		Syphon Rd, Wentworth Shire	Silver City Highway (Coomealla)	Southern boundary of Reserve Rd East	
RT		Tabbita Lane, Carrathool Shire	MR244/MR80 intersection	MR244/ Mid Western Hwy (SH6) intersection	
RT		Tapalin Mail Rd (Balranald Shire)	Sturt Highway (SH 14)	Balranald & Wentworth Shire Boundary	Travel is permitted in dry weather only
RT	SR82A	Taweni Rd, Parkes Shire	Shire Rd 76 (Bogan Rd)	Shire Road No 130	<ol style="list-style-type: none"> <li>1. Speed Restrictions 80km/h</li> <li>2. Access prohibited 7:30am- 9am and 3pm-4:30pm school days</li> <li>3. Daylight hours only (B-Doubles Exempt)</li> <li>4. During periods of wet weather, Parkes Shire Council to be consulted regarding possible road closures</li> </ol>

Type	Road No	Road Name	Starting point	Finishing point	Conditions
RT		Terangion St, Narromine	Murgah St	Manildra St	Vehicles accessing Narromine saleyards only
RT		Terangion St, Narromine	Murgah St	A'Beckett St	
RT		The Rocks Rd, Berrigan Shire (Parish of Langunya)	Racecourse Rd	Woolshed Rd	Travel permitted Oct to May only
RT		Thompson St, West Dubbo	Mitchell Hwy (SH7)	Whylandra St	
RT		Tillara Rd (Balranald Shire)	Sturt Highway (SH 14)	Tillara Station Entrance	Travel is permitted in dry weather only.
RT		Tocumwal-Mathoura road	Deane St (SH17), Tocumwal	Container Access road west of SH17	
RT		Townsend St, Finley	Newell Hwy (SH17)	Hamilton St	
RT		Trangie Saleyards, Trangie	Mitchell Hwy (SH7)	GrainCorp Silo	
RT	SR113	Treweekes Gap Lane, Parkes Shire	Condobolin Rd (MR61)	Middle Trundle Rd (Shire Rd 83)	<ol style="list-style-type: none"> <li>1. Speed Restrictions 80km/h</li> <li>2. Access prohibited 7:30am- 9am and 3pm- 4:30pm school days</li> <li>3. Daylight hours only (B-Doubles Exempt)</li> <li>4. During periods of wet weather, Parkes Shire Council to be consulted regarding possible road closures</li> </ol>
RT	354	Tullamore-Narromine Rd, Parkes Shire	Tullamore-Tottenham Rd (MR57)	Narromine Shire boundary	80Km/hr speed limit applies
RT		Tuppall Road, Tocumwal	Silo Rd, Tocumwal	Conargo Shire boundary	

Type	Road No	Road Name	Starting point	Finishing point	Conditions
RT		Twaddell Rd, Griffith	Entire length		
RT		Tycanna St, Moree	Bullus Dr	Gwydir Hwy (SH12)	
RT		Unnamed lane, Berrigan	Greggerys Road	Barretts Tyre Service	
RT	SR58	Un-named road, Lachlan Shire	MR7521	SR56	
RT		Victoria Park Rd, Osborne (Berrigan Shire)	Jerilderie St (MR564)	Mortons Rd	Travel permitted from October to May only
RT		Warrah St, Peak Hill, Parkes Shire	Mingelo St, Peak Hill	Bogan St, Peak Hill	1. Speed Restrictions 80km/h 2. Access prohibited 7:30am- 9am and 3pm- 4:30pm school days 3. Daylight hours only (B- Doubles Exempt) 4. During periods of wet weather, Parkes Shire Council to be consulted regarding possible road closures
RT	333	Warren– Carinda road	Oxley Hwy (SH11), Warren	Warren/Walgett Council boundary near Carinda	
RT	95	Watsons Lane, Jerilderie Shire	South Coree Rd	1.0km south of South Coree Rd	
RT		Weimby Benongal Rd (Balranald Shire)	Windomal Rd	Weimby Kyalite Rd	Travel permitted in dry weather only.
RT		Weimby Kyalte Rd (Balranald Shire)	Main Rd 67	Murrumbidgee River	Travel permitted in dry weather only.
RT		Wells St, Finley	Newell Hwy (SH17)	Graincorp Operations Ltd Silos	

Type	Road No	Road Name	Starting point	Finishing point	Conditions
RT		Westlime Rd, Parkes Shire	Main Rd 61 (Condobolin Rd)	Brolgan Rd	
RT		Whitton Stock Route, Griffith	Irrigation Way (MR80)	Burley Griffin Way	
RT		Whylandra St, West Dubbo	Thompson St, West Dubbo	Erskine St, Dubbo	
RT		Wilga Rd, Griffith	Murdoch Rd	Griffith City Council boundary	
RT		Wilga Road (Leeton Shire)	MR80 (Leeton Shire)	Leeton/ Griffith Shire boundary	Travel not permitted during the following hours on school days: 7.00am to 9.30am 3.30pm to 5.00pm
RT		Willandra Ave, Griffith	Kidman Way (MR321)	Kookora Street	
RT	410	Willanthry Bridge–The Priory road	Lachlan Valley Way (MR501), Willanthry Bridge	Condobolin–Cobar road (MR61) near The Priory	
RT		Wilson Rd, Jerilderie	Milthorpe Lane, Jerilderie	South to the departure side of Billabong Creek Bridge	Travel permitted from 1 November to 30 May only.
RT		Windomal Rd (Balranald Shire)	Main Road 67	Weimby Kyalite Rd	Travel permitted in dry weather only.
RT		Windomal Rd (Balranald Shire)	Sturt Highway SH14	Distance of 0.5kms	
RT		Wirraway Dr, Deniliquin	Ricemill Rd	Saleyards Rd	
RT		Wood Rd, Yenda	Whitton Stock Route	Casella Wines – 2.2km west of Whitton Stock Route	
RT		Wood Rd, Yenda	Whitton Stock Route	Casella Wines- 2.2km west of Whitton Stock Route	

Type	Road No	Road Name	Starting point	Finishing point	Conditions
RT		Wood St, Jerilderie	Mahonga St	Un-named lane 50m north of Mahonga st	
RT		Woodside Rd, Griffith	Brogden Rd	Southern boundary of Lot 2, DP877393, Griffith	
RT		Woodstock Rd (Berrigan Shire)	Riverina Hwy (SH20)	McNaughts	
RT	MR57S	Wyalong Rd, Lachlan Shire	MR377	Entrance to "Inala" property	
RT		Yanco Rd	"Aintree" west to Carrathiik Rd	Carrathool Rd	Seasonal approval – travel is permitted only during the months of November and December, and March-April- May.
RT	SR93	Yarrandale	MR202	End of road Fairfield Ramp	
RT		Yarrandale Rd, Dubbo	Boothenba Rd, North Dubbo	Moffat Drv, North Dubbo	
RT		Yarrowonga Rd, Berrigan	Riverina Hwy (SH20)	Mulwala-Barooga Rd (MR550)	Travel permitted Oct to May only
RT	SR29	Yarrie lake Rd, Narrabri	Intersection of Shire Roads 20 & 30	Corglen Storage (approx 3km)	
RT		Harley Court, Finley	Rice Mill Rd	Entire length of Harley Court	
RT		James Court, Finley	Rice Mill Rd	Entire length of James Court	
RT	SR36	Old Turrawan Rd, Narrabri	2.0 km South of Newell Highway	2.20 km South of Newell Highway	

### Appendix 2 – Part 2, 53.5 metre road train routes in New South Wales

Type	Road No	Road Name	Starting point	Finishing point	Conditions
RT	007	Mitchell Hwy	Northern end of North Bourke Bridge	NSW/Qld border at Barrington	Vehicle components must not be left on roadside

## Route Assessment Procedures and Route Information for Road Trains

**Assessments** – Operators are required to obtain approval for any routes or terminals not previously approved for road trains. Applications for such approvals can be made to contact officers in the RTA area offices responsible for the particular route. Contact telephone and fax numbers are listed below.

Contact officers are available to discuss and advise on route and terminal assessment procedures, and provide a time estimate for the assessment process. The time needed for assessment will be affected by the number of other organisations, such as councils, that may need to be consulted. Applicants will be advised if trials are necessary for a route or a terminal.

Approved routes are updated regularly on the RTA website at [www.rta.nsw.gov.au/heavyvehicles](http://www.rta.nsw.gov.au/heavyvehicles). Information on new route approvals can also be obtained from the respective RTA regional contact officers whose phone and fax numbers are listed below.

### Contacts

Route Area	Telephone	Facsimile
Northern NSW *Grafton	02 – 6640 13841	02 – 6640 1304
Southern NSW *Wollongong	02 - 4221 2468	02 - 4221 2590
South Western NSW *Wagga Wagga	02 – 6938 1145	02 - 6938 1183
Western NSW *Parkes	02 - 6861 1478	02 – 6861 1496

---

---